

For Research Use Only

MKL1/MRTF-A Recombinant antibody

Catalog Number: 84903-1-RR



Basic Information

Catalog Number: 84903-1-RR	GenBank Accession Number: BC115039	Purification Method: Protein A purification
Size: 100ul , Concentration: 1000 µg/ml by Nanodrop;	GeneID (NCBI): 57591	CloneNo.: 242021B4
Source: Rabbit	UNIPROT ID: Q969V6	Recommended Dilutions: WB 1:5000-1:50000
Isotype: IgG	Full Name: megakaryoblastic leukemia (translocation) 1	
Immunogen Catalog Number: AG15308	Calculated MW: 931 aa, 99 kDa	
	Observed MW: 145-160 kDa	

Applications

Tested Applications: WB, ELISA	Positive Controls: WB : HepG2 cells, HEK-293 cells, HeLa cells
Species Specificity: human	

Background Information

Megakaryocytic leukemia 1 (MKL1), also known as myocardin-related transcription factor A (MRTF-A), is a transcriptional regulator involved in a wide range of pathophysiological processes in the cardiovascular system. MKL1 was initially identified as a co-factor for serum response factor (SRF) to regulate the transcription of contractile genes. Forced expression of MKL1 in non-muscle cells leads to robust up-regulation of contractile genes (PMID: 36587486, PMID: 37199168, PMID: 39222836). MKL1 is ubiquitously expressed and has been detected in lung, placenta, small intestine, liver, kidney, spleen, thymus, colon, muscle, heart, and brain. The molecular weight of MKL1 observed is consistent with what has been described in the literature (PMID: 34944031).

Storage

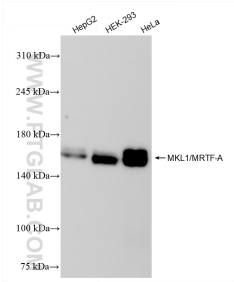
Storage:
Store at -20°C. Stable for one year after shipment.
Storage Buffer:
PBS with 0.02% sodium azide and 50% glycerol pH 7.3.
Aliquoting is unnecessary for -20°C storage

*** 20ul sizes contain 0.1% BSA

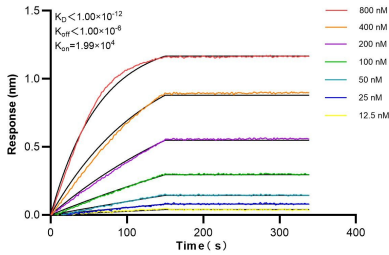
For technical support and original validation data for this product please contact:
T: 1 (888) 4PTGLAB (1-888-478-4522) (toll free in USA), or 1(312) 455-8498 (outside USA)
E: proteintech@ptglab.com
W: ptglab.com

This product is exclusively available under Proteintech Group brand and is not available to purchase from any other manufacturer.

Selected Validation Data



Various lysates were subjected to SDS PAGE followed by western blot with 84903-1-RR (MKL1/MRTF-A antibody) at dilution of 1:10000 incubated at room temperature for 1.5 hours.



Biolayer interferometry (BLI) kinetic assays of 84903-1-RR against Human MKL1/MRTF-A were performed. The affinity constant is below 1 pM.