

For Research Use Only

# Di/Tri-Methyl-Histone H3 (Lys4) Recombinant antibody, PBS Only

Catalog Number: 84908-2-PBS



## Basic Information

Catalog Number:

84908-2-PBS

Size:

100ug , Concentration: 1 mg/ml by  
Nanodrop;

Source:

Rabbit

Isotype:

IgG

GenBank Accession Number:

BC066245

GeneID (NCBI):

8350

UNIPROT ID:

P68431

Full Name:

histone cluster 1, H3a

Purification Method:

Protein A purification

CloneNo.:

241942D11

## Applications

Tested Applications:

WB, IHC, IF/ICC, Dot Blot, Indirect ELISA

Species Specificity:

human, mouse, rat

## Storage

Storage:

Store at -80°C.

Storage Buffer:

PBS Only

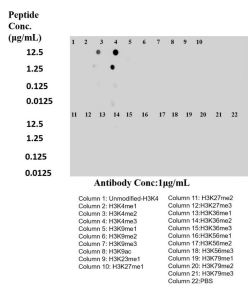
For technical support and original validation data for this product please contact:

T: 1 (888) 4PTGLAB (1-888-478-4522) (toll free  
in USA), or 1(312) 455-8498 (outside USA)

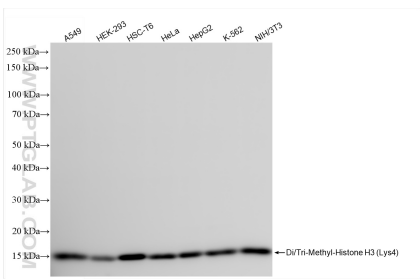
E: [proteintech@ptglab.com](mailto:proteintech@ptglab.com)  
W: [ptglab.com](http://ptglab.com)

This product is exclusively available under Proteintech  
Group brand and is not available to purchase from any  
other manufacturer.

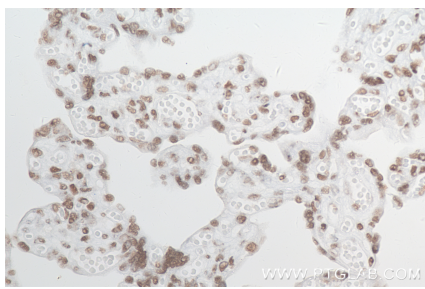
Selected Validation Data



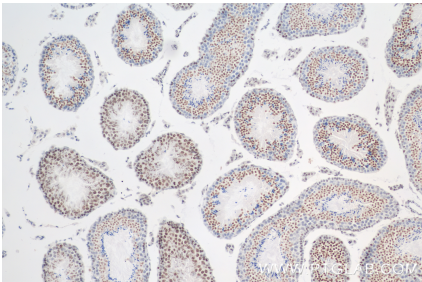
Dot blot analysis was used to confirm the specificity of 84908-2-RR Di/Tri-Methyl-Histone H3 (Lys4) antibody. Peptides were spotted onto NC and probed with antibody at 1 µg/mL. The amount of peptide (ug/mL) spotted is indicated next to each row. This data was developed using the same antibody clone with 84908-2-PBS in a different storage buffer formulation.



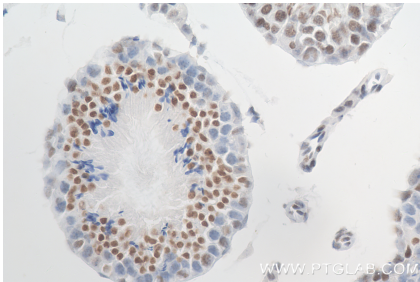
Various lysates were subjected to SDS PAGE followed by western blot with 84908-2-RR (Di/Tri-Methyl-Histone H3 (Lys4) antibody) at dilution of 1:5000 incubated at room temperature for 1.5 hours. This data was developed using the same antibody clone with 84908-2-PBS in a different storage buffer formulation.



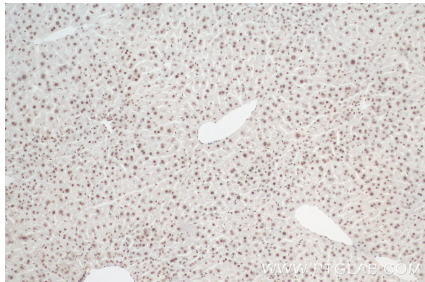
Immunohistochemical analysis of paraffin-embedded human placenta tissue slide using 84908-2-RR (Di/Tri-Methyl-Histone H3 (Lys4) antibody) at dilution of 1:1000 (under 40x lens). Heat mediated antigen retrieval with Tris-EDTA buffer (pH 9.0). This data was developed using the same antibody clone with 84908-2-PBS in a different storage buffer formulation.



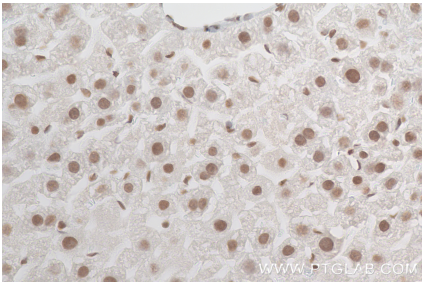
Immunohistochemical analysis of paraffin-embedded mouse testis tissue slide using 84908-2-RR (Di/Tri-Methyl-Histone H3 (Lys4) antibody) at dilution of 1:1000 (under 40x lens). Heat mediated antigen retrieval with Tris-EDTA buffer (pH 9.0). This data was developed using the same antibody clone with 84908-2-PBS in a different storage buffer formulation.



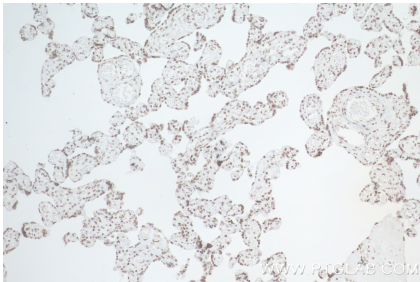
Immunohistochemical analysis of paraffin-embedded mouse testis tissue slide using 84908-2-RR (Di/Tri-Methyl-Histone H3 (Lys4) antibody) at dilution of 1:1000 (under 40x lens). Heat mediated antigen retrieval with Tris-EDTA buffer (pH 9.0). This data was developed using the same antibody clone with 84908-2-PBS in a different storage buffer formulation.



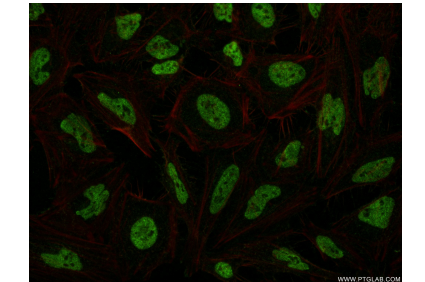
Immunohistochemical analysis of paraffin-embedded mouse liver tissue slide using 84908-2-RR (Di/Tri-Methyl-Histone H3 (Lys4) antibody) at dilution of 1:1000 (under 10x lens). Heat mediated antigen retrieval with Tris-EDTA buffer (pH 9.0). This data was developed using the same antibody clone with 84908-2-PBS in a different storage buffer formulation.



Immunohistochemical analysis of paraffin-embedded mouse liver tissue slide using 84908-2-RR (Di/Tri-Methyl-Histone H3 (Lys4) antibody) at dilution of 1:1000 (under 40x lens). Heat mediated antigen retrieval with Tris-EDTA buffer (pH 9.0). This data was developed using the same antibody clone with 84908-2-PBS in a different storage buffer formulation.



Immunohistochemical analysis of paraffin-embedded human placenta tissue slide using 84908-2-RR (Di/Tri-Methyl-Histone H3 (Lys4) antibody) at dilution of 1:1000 (under 10x lens). Heat mediated antigen retrieval with Tris-EDTA buffer (pH 9.0). This data was developed using the same antibody clone with 84908-2-PBS in a different storage buffer formulation.



Immunofluorescent analysis of (4% PFA) fixed HeLa cells using HIST1H3A antibody (84908-2-RR, Clone: 241942D11) at dilution of 1:500 and CoraLite®488-Conjugated Goat Anti-Rabbit IgG(H+L) (SA00013-2), CL594-Phalloidin (red). This data was developed using the same antibody clone with 84908-2-PBS in a different storage buffer formulation.