

For Research Use Only

IMPDH1 Recombinant antibody

Catalog Number: 84913-1-RR



Basic Information

Catalog Number:

84913-1-RR

Size:

100ul, Concentration: 1000 ug/ml by Nanodrop;

Source:

Rabbit

Isotype:

IgG

Immunogen Catalog Number:

AG17473

GenBank Accession Number:

BC033622

GeneID (NCBI):

3614

UNIPROT ID:

P20839

Full Name:

IMP (inosine monophosphate) dehydrogenase 1

Calculated MW:

563 aa, 60 kDa

Observed MW:

53-60 kDa

Purification Method:

Protein A purification

CloneNo.:

242329D8

Recommended Dilutions:

WB 1:1000-1:8000

Applications

Tested Applications:

WB, ELISA

Species Specificity:

human

Positive Controls:

WB: Raji cells, HeLa cells, A431 cells

Background Information

IMPDH1(Inosine-5'-monophosphate dehydrogenase 1) is also named as IMPD1, IMP dehydrogenase 1 and belongs to the IMPDH/GMPR family. It catalyzes the rate limiting step of de novo guanine synthesis and an important target for the development of drugs with both chemotherapeutic and immunosuppressive activity. It may also have a role in the development of malignancy and the growth progression of some tumors. This protein has some isoforms produced by alternative splicing with the molecular mass of 53-65 kDa.

Storage

Storage:

Store at -20°C. Stable for one year after shipment.

Storage Buffer:

PBS with 0.02% sodium azide and 50% glycerol pH 7.3.

Aliquoting is unnecessary for -20°C storage

*** 20ul sizes contain 0.1% BSA

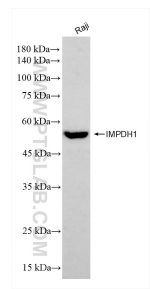
For technical support and original validation data for this product please contact:

T: 1 (888) 4PTGLAB (1-888-478-4522) (toll free in USA), or 1(312) 455-8498 (outside USA)

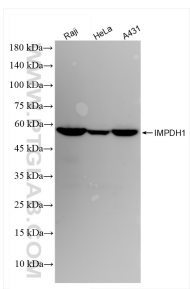
E: proteintech@ptglab.com
W: ptglab.com

This product is exclusively available under Proteintech Group brand and is not available to purchase from any other manufacturer.

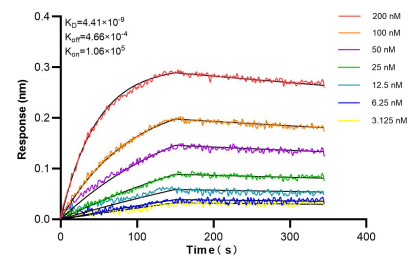
Selected Validation Data



Raji cells were subjected to SDS PAGE followed by western blot with 84913-1-RR (IMPDH1 antibody) at dilution of 1:4000 incubated at room temperature for 1.5 hours.



Various lysates were subjected to SDS PAGE followed by western blot with 84913-1-RR (IMPDH1 antibody) at dilution of 1:1000 incubated at room temperature for 1.5 hours.



Biolayer interferometry (BLI) kinetic assays of 84913-1-RR against Human IMPDH1 were performed. The affinity constant is 4.41 nM.