

For Research Use Only

# GPR56 Recombinant antibody

Catalog Number: 84915-1-RR



## Basic Information

<b>Catalog Number:</b> 84915-1-RR	<b>GenBank Accession Number:</b> NM_001145771.2	<b>Purification Method:</b> Protein A purification
<b>Size:</b> 100ul , Concentration: 1000 ug/ml by Nanodrop;	<b>GeneID (NCBI):</b> 9289	<b>CloneNo.:</b> 242249A7
<b>Source:</b> Rabbit	<b>UNIPROT ID:</b> Q9Y653	<b>Recommended Dilutions:</b> WB 1:2000-1:10000
<b>Isotype:</b> IgG	<b>Full Name:</b> G protein-coupled receptor 56	
	<b>Calculated MW:</b> 78 kDa	
	<b>Observed MW:</b> 65 kDa	

## Applications

<b>Tested Applications:</b> WB, ELISA	<b>Positive Controls:</b> WB : HeLa cells, A549 cells, human placenta tissue
<b>Species Specificity:</b> human	

## Background Information

GPR56 (G-protein-coupled receptor 56, also named ADGRG1) is a member of the adhesion G-protein coupled receptor (aGPCR) family and one of the important players in the normal development of the brain. It plays a pivotal role in diverse neurobiological processes, including cortical formation, oligodendrocyte development, and myelination (PMID: 32798453). Moreover, GPR56 has been reported to regulate VEGF secretion and angiogenesis in melanoma (PMID: 37579299).

## Storage

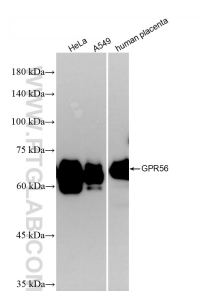
**Storage:**  
Store at -20°C. Stable for one year after shipment.  
**Storage Buffer:**  
PBS with 0.02% sodium azide and 50% glycerol pH 7.3.  
Aliquoting is unnecessary for -20°C storage

\*\*\* 20ul sizes contain 0.1% BSA

For technical support and original validation data for this product please contact:  
T: 1 (888) 4PTGLAB (1-888-478-4522) (toll free in USA), or 1(312) 455-8498 (outside USA)  
E: [proteintech@ptglab.com](mailto:proteintech@ptglab.com)  
W: [ptglab.com](http://ptglab.com)

This product is exclusively available under Proteintech Group brand and is not available to purchase from any other manufacturer.

## Selected Validation Data



HeLa cells were subjected to SDS PAGE followed by western blot with 84915-1-RR (GPR56 antibody) at dilution of 1:5000 incubated at room temperature for 1.5 hours.