

For Research Use Only

FEN1 Recombinant antibody, PBS Only

Catalog Number: 84916-5-PBS



Basic Information

Catalog Number: 84916-5-PBS	GenBank Accession Number: BC000323	Purification Method: Protein A purification
Size: 100ug, Concentration: 1 mg/ml by Nanodrop;	GeneID (NCBI): 2237	CloneNo.: 242330C10
Source: Rabbit	UNIPROT ID: P39748	
Isotype: IgG	Full Name: flap structure-specific endonuclease 1	
Immunogen Catalog Number: AG6552	Calculated MW: 43 kDa	
	Observed MW: 48 kDa	

Applications

Tested Applications:
WB, IF/ICC, FC (Intra), Indirect ELISA

Species Specificity:
human, mouse

Background Information

FEN1(Flap endonuclease-1) is the prototypical member of the 5'-nuclease superfamily, whose activities span a range of cellular pathways involved in DNA replication and genome maintenance (PMID: 22118811, 21496641, 20929870). FEN1 is a structure-selective metallo nuclease essential for Okazaki fragment maturation through efficient removal of 5' flaps resulting from strand displacement during lagging-strand synthesis (PMID: 8144677, 9081985). FEN1 is overexpressed in multiple cancer types, and has been suggested both as a biomarker relating to prognosis and disease progression and as a potential therapeutic target (PMID: 19010819, 16879693, 19596913, 27526030).

Storage

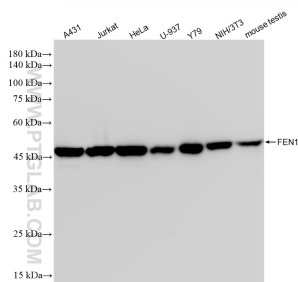
Storage:
Store at -80°C.

Storage Buffer:
PBS Only

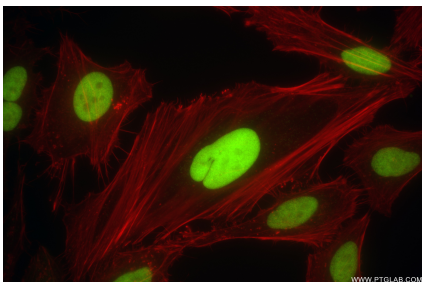
For technical support and original validation data for this product please contact:
T: 1 (888) 4PTGLAB (1-888-478-4522) (toll free in USA), or 1(312) 455-8498 (outside USA)
E: proteintech@ptglab.com
W: ptglab.com

This product is exclusively available under Proteintech Group brand and is not available to purchase from any other manufacturer.

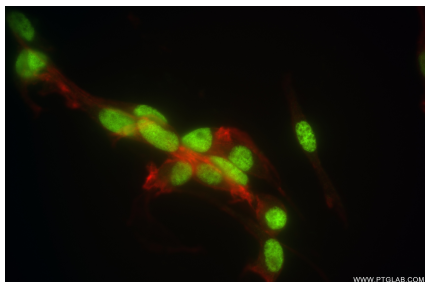
Selected Validation Data



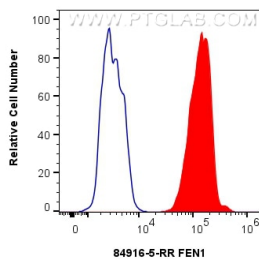
Various lysates were subjected to SDS PAGE followed by western blot with 84916-5-RR (FEN1 antibody) at dilution of 1:10000 incubated at room temperature for 1.5 hours. This data was developed using the same antibody clone with 84916-5-PBS in a different storage buffer formulation.



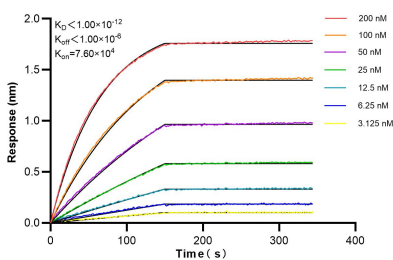
Immunofluorescent analysis of (4% PFA) fixed HeLa cells using FEN1 antibody (84916-5-RR, Clone: 242330C10) at dilution of 1:500 and CoraLite®488-Conjugated Goat Anti-Rabbit IgG(H+L) (SA00013-2), CL594-Phalloidin (red). This data was developed using the same antibody clone with 84916-5-PBS in a different storage buffer formulation.



Immunofluorescent analysis of (4% PFA) fixed NIH/3T3 cells using FEN1 antibody (84916-5-RR, Clone: 242330C10) at dilution of 1:500 and CoraLite®488-Conjugated Goat Anti-Rabbit IgG(H+L) (SA00013-2), CL594-Phalloidin (red). This data was developed using the same antibody clone with 84916-5-PBS in a different storage buffer formulation.



1x10⁶ HeLa cells were intracellularly stained with 0.25 ug FEN1 Recombinant antibody (84916-5-RR, Clone:242330C10) and CoraLite®488-Conjugated Goat Anti-Rabbit IgG(H+L) (SA00013-2)(red), or 0.25 ug Rabbit IgG Isotype Control RecAb (98136-1-RR, Clone: 240953C9) (blue). Cells were fixed and permeabilized with Transcription Factor Staining Buffer Kit (PF00011). This data was developed using the same antibody clone with 84916-5-PBS in a



Biolayer interferometry (BLI) kinetic assays of 84916-5-RR against Human FEN1 were performed. The affinity constant is below 1 pM.