

For Research Use Only

SHOC2/Sur-8 Recombinant antibody, PBS Only

Catalog Number: 84917-5-PBS



Basic Information

Catalog Number:

84917-5-PBS

Size:

100ug, Concentration: 1 mg/ml by Nanodrop;

Source:

Rabbit

Isotype:

IgG

Immunogen Catalog Number:

AG11754

GenBank Accession Number:

BC050445

GeneID (NCBI):

8036

UNIPROT ID:

Q9UQ13

Full Name:

soc-2 suppressor of clear homolog (C. elegans)

Calculated MW:

582 aa, 65 kDa

Observed MW:

65 kDa

Purification Method:

Protein A purification

CloneNo.:

242343E6

Applications

Tested Applications:

WB, Indirect ELISA

Species Specificity:

human

Background Information

SHOC2 is also named as Sur-8. The SHOC2 protein, along with MRAS and PP1C, forms a high affinity, heterotrimeric holoenzyme that activates RAF kinases by dephosphorylating a specific phosphoserine (PMID: 37074066). SHOC2, a key protein mediating the Ras-Raf-ERK pathway, could act as a scaffolding protein to facilitate the activation of the pathway by mediating the interaction of key components of the pathway (PMID: 37170083). The scaffold protein Shoc2 is a critical modulator of ERK1/2 signals, and mutations in the shoc2 gene lead to the human developmental disease known as Noonan-like syndrome with loose anagen hair (NSLH) (PMID: 36265687).

Storage

Storage:

Store at -80°C.

Storage Buffer:

PBS only, pH7.3

For technical support and original validation data for this product please contact:

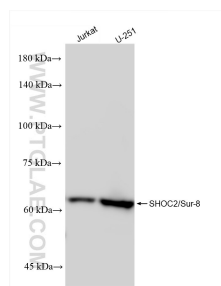
T: 1 (888) 4PTGLAB (1-888-478-4522) (toll free in USA), or 1(312) 455-8498 (outside USA)

E: proteintech@ptglab.com

W: ptglab.com

This product is exclusively available under Proteintech Group brand and is not available to purchase from any other manufacturer.

Selected Validation Data



Various lysates were subjected to SDS PAGE followed by western blot with 84917-5-RR (SHOC2 antibody) at dilution of 1:10000 incubated at room temperature for 1.5 hours. This data was developed using the same antibody clone with 84917-5-PBS in a different storage buffer formulation.