

For Research Use Only

HECTD1 Recombinant antibody, PBS Only

Catalog Number: 84918-5-PBS



Basic Information

Catalog Number: 84918-5-PBS	GenBank Accession Number: BC006237	Purification Method: Protein A purification
Size: 100ug , Concentration: 1 mg/ml by Nanodrop;	GeneID (NCBI): 25831	CloneNo.: 242344A2
Source: Rabbit	UNIPROT ID: Q9ULT8	
Isotype: IgG	Full Name: HECT domain containing 1	
Immunogen Catalog Number: AG14581	Calculated MW: 2612 aa, 290 kDa	
	Observed MW: 290 kDa	

Applications

Tested Applications:
WB, Indirect ELISA

Species Specificity:
human

Background Information

HECTD1 (E3 ubiquitin-protein ligase), which accepts ubiquitin from an E2 ubiquitin-conjugating enzyme in the form of a thioester and then directly transfers the ubiquitin to targeted substrates, may be required for development of the head mesenchyme and neural tube closure. It is also involved in sporadic Parkinson's disease (PMID:16714300). This antibody is specific to HECTD1.

Storage

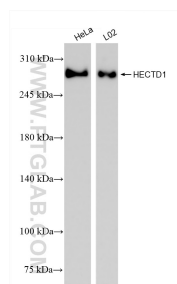
Storage:
Store at -80°C.

Storage Buffer:
PBS Only

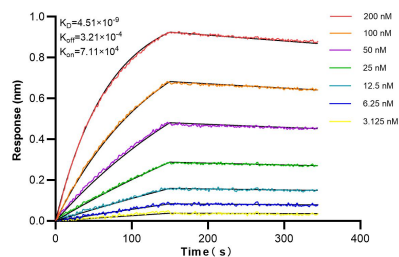
For technical support and original validation data for this product please contact:
T: 1 (888) 4PTGLAB (1-888-478-4522) (toll free in USA), or 1(312) 455-8498 (outside USA)
E: proteintech@ptglab.com
W: ptglab.com

This product is exclusively available under Proteintech Group brand and is not available to purchase from any other manufacturer.

Selected Validation Data



Various lysates were subjected to SDS PAGE followed by western blot with 84918-5-RR (HECTD1 antibody) at dilution of 1:10000 incubated at room temperature for 1.5 hours. This data was developed using the same antibody clone with 84918-5-PBS in a different storage buffer formulation.



Biolayer interferometry (BLI) kinetic assays of 84918-5-RR against Human HECTD1 were performed. The affinity constant is 4.51 nM.