

For Research Use Only

# Mouse CSF1R/CD115 Recombinant antibody, PBS Only (Capture)

Catalog Number: 84919-1-PBS



## Basic Information

<b>Catalog Number:</b> 84919-1-PBS	<b>GenBank Accession Number:</b> NM_001037859.2	<b>Purification Method:</b> Protein A purification
<b>Size:</b> 100ug , Concentration: 1 mg/ml by Nanodrop;	<b>GeneID (NCBI):</b> 12978	<b>CloneNo.:</b> 242213B1
<b>Source:</b> Rabbit	<b>UNIPROT ID:</b> P09581	
<b>Isotype:</b> IgG	<b>Full Name:</b> colony stimulating factor 1 receptor	
	<b>Calculated MW:</b> 109 kDa	
	<b>Observed MW:</b> 110-170 kDa	

## Applications

**Tested Applications:**  
WB, IF/ICC, Cytometric bead array, Sandwich ELISA, Indirect ELISA, Sample test

**Species Specificity:**  
mouse

## Product Information

84919-1-PBS targets CSF1R/CD115 as part of a matched antibody pair:

MP01676-2: 84919-1-PBS capture and 84919-2-PBS detection (validated in Cytometric bead array, Sandwich ELISA)

Unconjugated rabbit recombinant monoclonal antibody in PBS only (BSA and azide free) storage buffer at a concentration of 1 mg/mL, ready for conjugation. Created using Proteintech's proprietary in-house recombinant technology. Recombinant production enables unrivalled batch-to-batch consistency, easy scale-up, and future security of supply.

This conjugation ready format makes antibodies ideal for use in many applications including: ELISAs, multiplex assays requiring matched pairs, mass cytometry, and multiplex imaging applications. Antibody use should be optimized by the end user for each application and assay.

## Background Information

CSF1R (colony-stimulating factor 1 receptor) belongs to the type III protein tyrosine kinase receptor family. CSF1R-mediated signaling is crucial for the differentiation and survival of the mononuclear phagocyte system and macrophages in particular (PMID: 28716061).

## Storage

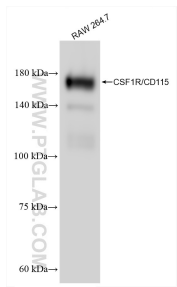
**Storage:**  
Store at -80°C.

**Storage Buffer:**  
PBS Only

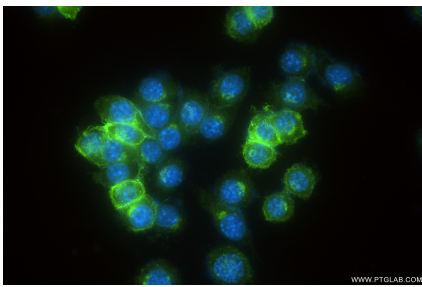
For technical support and original validation data for this product please contact:  
T: 1 (888) 4PTGLAB (1-888-478-4522) (toll free in USA), or 1(312) 455-8498 (outside USA)  
E: [proteintech@ptglab.com](mailto:proteintech@ptglab.com)  
W: [ptglab.com](http://ptglab.com)

This product is exclusively available under Proteintech Group brand and is not available to purchase from any other manufacturer.

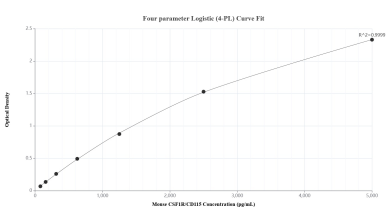
Selected Validation Data



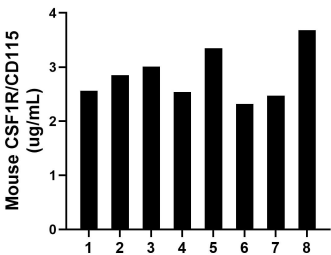
RAW 264.7 cells were subjected to SDS PAGE followed by western blot with 84919-1-RR (M-CSF R/CD115 antibody) at dilution of 1:5000 incubated at room temperature for 1.5 hours. This data was developed using the same antibody clone with 84919-1-PBS in a different storage buffer formulation.



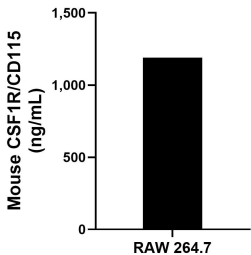
Immunofluorescent analysis of (4% PFA) fixed RAW 264.7 cells using CSF1R/CD115 antibody (84919-1-RR, Clone: 242213B1 ) at dilution of 1:400 and CoraLite® 488-Conjugated Goat Anti-Rabbit IgG(H+L) (SA00013-2). This data was developed using the same antibody clone with 84919-1-PBS in a different storage buffer formulation.



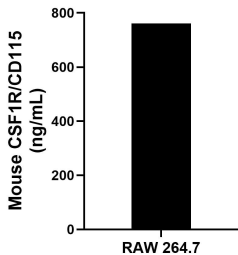
Sandwich ELISA standard curve of MP01676-2, Mouse CSF1R/CD115 Recombinant Matched Antibody Pair - PBS only. 84919-1-PBS was coated to a plate as the capture antibody and incubated with serial dilutions of standard Eg1816. 84919-2-PBS was HRP conjugated as the detection antibody. Range: 78.1-5000 pg/mL.



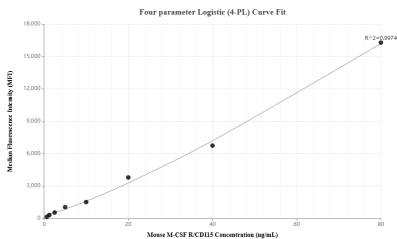
Serum of eight mice was measured. The CSF1R/CD115 concentration of detected samples was determined to be 2.9 ug/mL with a range of 2.3-3.7 ug/mL.



RAW 264.7 were cultured in DMEM supplemented with 10% fetal bovine serum, 2.5 mM L-glutamine, 100 U/mL penicillin, and 100 µg/mL streptomycin sulfate. An aliquot of the cell culture supernate was removed, assayed for mouse CSF1R/CD115, and measured 1,189.8 pg/mL.



The mean CSF1R/CD115 concentration was determined to be 760.8 ng/mL in RAW 264.7 cell extract based on a 7.5 mg/mL extract load.



Cytometric bead array standard curve of MP01676-2, MOUSE CSF1R/CD115 Recombinant Matched Antibody Pair, PBS Only. Capture antibody: 84919-1-PBS. Detection antibody: 84919-2-PBS. Standard: Eg1816. Range: 0.625-80 ng/mL.