

For Research Use Only

EPB42 Recombinant antibody, PBS Only (Detector)

Catalog Number: 84921-3-PBS



Basic Information

Catalog Number: 84921-3-PBS	GenBank Accession Number: BC096093	Purification Method: Protein A purification
Size: 100ug , Concentration: 1 mg/ml by Nanodrop;	GeneID (NCBI): 2038	CloneNo.: 242412F4
Source: Rabbit	UNIPROT ID: P16452	
Isotype: IgG	Full Name: erythrocyte membrane protein band 4.2	
Immunogen Catalog Number: AG23556	Observed MW: 77 kDa	

Applications

Tested Applications:
WB, IHC, IF/ICC, Cytometric bead array, Indirect ELISA

Species Specificity:
human

Product Information

84921-3-PBS targets EPB42 as part of a matched antibody pair:

MP01708-1: 84921-2-PBS capture and 84921-3-PBS detection (validated in Cytometric bead array)

MP01708-2: 84921-1-PBS capture and 84921-3-PBS detection (validated in Cytometric bead array)

Unconjugated rabbit recombinant monoclonal antibody in PBS only (BSA and azide free) storage buffer at a concentration of 1 mg/mL, ready for conjugation. Created using Proteintech's proprietary in-house recombinant technology. Recombinant production enables unrivalled batch-to-batch consistency, easy scale-up, and future security of supply.

This conjugation ready format makes antibodies ideal for use in many applications including: ELISAs, multiplex assays requiring matched pairs, mass cytometry, and multiplex imaging applications. Antibody use should be optimized by the end user for each application and assay.

Background Information

EPB42, also known as Protein 4.2, is amongst the most abundant protein components of the erythrocyte membrane, representing approximately 5% membrane content or $\sim 2.5 \times 10^5$ copies/cell. EPB42 binds to the cytoplasmic domain of band 3, which serves as a site for the anchorage of several membrane skeletal proteins (PMID: 19269200, 12049649). EPB42 is a 72 kDa peripheral membrane protein.

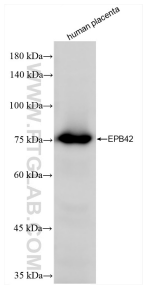
Storage

Storage:
Store at -80°C.
Storage Buffer:
PBS only

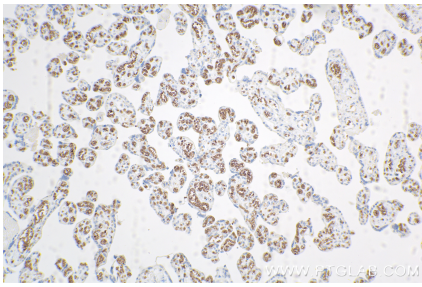
For technical support and original validation data for this product please contact:
T: 1 (888) 4PTGLAB (1-888-478-4522) (toll free in USA), or 1(312) 455-8498 (outside USA)
E: proteintech@ptglab.com
W: ptglab.com

This product is exclusively available under Proteintech Group brand and is not available to purchase from any other manufacturer.

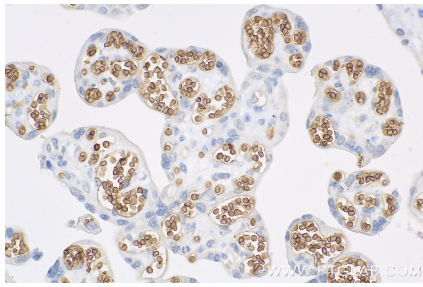
Selected Validation Data



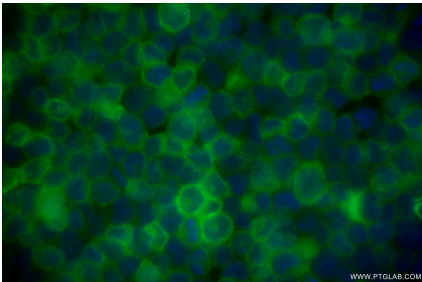
human placenta tissue were subjected to SDS PAGE followed by western blot with 84921-3-RR (EPB42 antibody) at dilution of 1:2000 incubated at room temperature for 1.5 hours. This data was developed using the same antibody clone with 84921-3-PBS in a different storage buffer formulation.



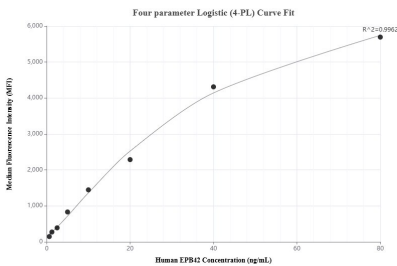
Immunohistochemical analysis of paraffin-embedded human placenta tissue slide using 84921-3-RR (EPB42 antibody) at dilution of 1:400 (under 10x lens). Heat mediated antigen retrieval with Tris-EDTA buffer (pH 9.0). This data was developed using the same antibody clone with 84921-3-PBS in a different storage buffer formulation.



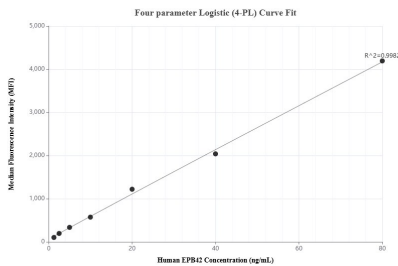
Immunohistochemical analysis of paraffin-embedded human placenta tissue slide using 84921-3-RR (EPB42 antibody) at dilution of 1:400 (under 40x lens). Heat mediated antigen retrieval with Tris-EDTA buffer (pH 9.0). This data was developed using the same antibody clone with 84921-3-PBS in a different storage buffer formulation.



Immunofluorescent analysis of (4% PFA) fixed HEL cells using EPB42 antibody (84921-3-RR, Clone: 242412F4) at dilution of 1:400 and CoraLite® 488-Conjugated Goat Anti-Rabbit IgG(H+L) (SA00013-2). This data was developed using the same antibody clone with 84921-3-PBS in a different storage buffer formulation.



Cytometric bead array standard curve of MP01708-1, EPB42 Recombinant Matched Antibody Pair, PBS Only. Capture antibody: 84921-2-PBS. Detection antibody: 84921-3-PBS. Standard: Ag23556. Range: 0.625-80 ng/mL.



Cytometric bead array standard curve of MP01708-2, EPB42 Recombinant Matched Antibody Pair, PBS Only. Capture antibody: 84921-1-PBS. Detection antibody: 84921-3-PBS. Standard: Ag23556. Range: 1.25-80 ng/mL.