

For Research Use Only

EPB42 Recombinant antibody

Catalog Number: 84921-3-RR



Basic Information

Catalog Number:	84921-3-RR	GenBank Accession Number:	BC096093	Purification Method:	Protein A purification
Size:	100ul , Concentration: 1000 µg/ml by Nanodrop;	GeneID (NCBI):	2038	CloneNo.:	242412F4
Source:	Rabbit	UNIPROT ID:	P16452	Recommended Dilutions:	WB 1:1000-1:4000 IHC 1:200-1:800 IF/ICC 1:200-1:800
Isotype:	IgG	Full Name:	erythrocyte membrane protein band 4.2		
Immunogen Catalog Number:	AG23556	Observed MW:	77 kDa		

Applications

Tested Applications:	WB, IHC, IF/ICC, ELISA	Positive Controls:	
Species Specificity:	human	WB :	human placenta tissue,
		IHC :	human placenta tissue,
		IF/ICC :	HEL cells,
Note-IHC: suggested antigen retrieval with TE buffer pH 9.0; (*) Alternatively, antigen retrieval may be performed with citrate buffer pH 6.0			

Background Information

EPB42, also known as Protein 4.2, is amongst the most abundant protein components of the erythrocyte membrane, representing approximately 5% membrane content or $\sim 2.5 \times 10^5$ copies/cell. EPB42 binds to the cytoplasmic domain of band 3, which serves as a site for the anchorage of several membrane skeletal proteins (PMID: 19269200, 12049649). EPB42 is a 72 kDa peripheral membrane protein.

Storage

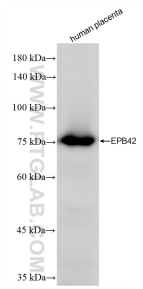
Storage:
Store at -20°C. Stable for one year after shipment.
Storage Buffer:
PBS with 0.02% sodium azide and 50% glycerol
Aliquoting is unnecessary for -20°C storage

*** 20ul sizes contain 0.1% BSA

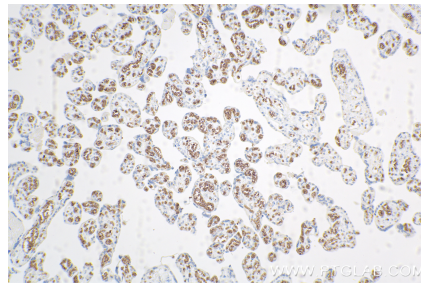
For technical support and original validation data for this product please contact:
T: 1 (888) 4PTGLAB (1-888-478-4522) (toll free in USA), or 1(312) 455-8498 (outside USA)
E: proteintech@ptglab.com
W: ptglab.com

This product is exclusively available under Proteintech Group brand and is not available to purchase from any other manufacturer.

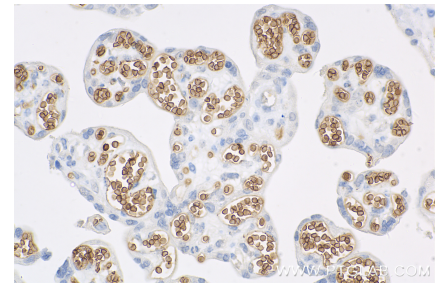
Selected Validation Data



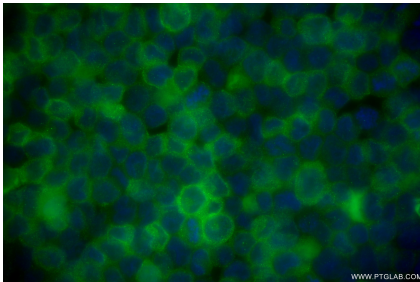
human placenta tissue were subjected to SDS PAGE followed by western blot with 84921-3-RR (EPB42 antibody) at dilution of 1:2000 incubated at room temperature for 1.5 hours.



Immunohistochemical analysis of paraffin-embedded human placenta tissue slide using 84921-3-RR (EPB42 antibody) at dilution of 1:400 (under 10x lens). Heat mediated antigen retrieval with Tris-EDTA buffer (pH 9.0).



Immunohistochemical analysis of paraffin-embedded human placenta tissue slide using 84921-3-RR (EPB42 antibody) at dilution of 1:400 (under 40x lens). Heat mediated antigen retrieval with Tris-EDTA buffer (pH 9.0).



Immunofluorescent analysis of (4% PFA) fixed HEL cells using EPB42 antibody (84921-3-RR, Clone: 242412F4) at dilution of 1:400 and CoraLite® 488-Conjugated Goat Anti-Rabbit IgG(H+L) (SA00013-2).