

For Research Use Only

JUNB Recombinant antibody, PBS Only (Capture)

Catalog Number: 84922-3-PBS



Basic Information

Catalog Number: 84922-3-PBS	GenBank Accession Number: BC004250	Purification Method: Protein A purification
Size: 100ug , Concentration: 1 mg/ml by Nanodrop;	GeneID (NCBI): 3726	CloneNo.: 242562F9
Source: Rabbit	UNIPROT ID: P17275	
Isotype: IgG	Full Name: jun B proto-oncogene	
Immunogen Catalog Number: AG0752	Calculated MW: 36 kDa	

Applications

Tested Applications:
Cytometric bead array, Sandwich ELISA, Indirect ELISA, Sample test

Species Specificity:
human

Product Information

84922-3-PBS targets JUNB as part of a matched antibody pair:

MP01695-1: 84922-3-PBS capture and 84922-2-PBS detection (validated in Cytometric bead array)

MP01695-3: 84922-3-PBS capture and 84922-4-PBS detection (validated in Sandwich ELISA)

Unconjugated rabbit recombinant monoclonal antibody in PBS only (BSA and azide free) storage buffer at a concentration of 1 mg/mL, ready for conjugation. Created using Proteintech's proprietary in-house recombinant technology. Recombinant production enables unrivalled batch-to-batch consistency, easy scale-up, and future security of supply.

This conjugation ready format makes antibodies ideal for use in many applications including: ELISAs, multiplex assays requiring matched pairs, mass cytometry, and multiplex imaging applications. Antibody use should be optimized by the end user for each application and assay.

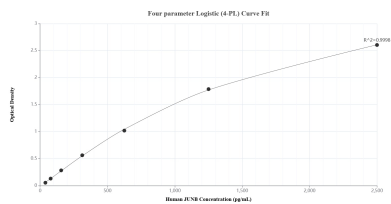
Storage

Storage:
Store at -80°C.
Storage Buffer:
PBS Only

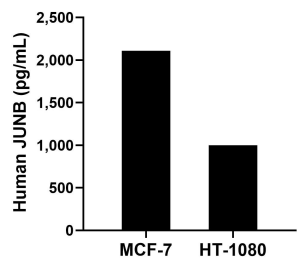
For technical support and original validation data for this product please contact:
T: 1 (888) 4PTGLAB (1-888-478-4522) (toll free in USA), or 1(312) 455-8498 (outside USA)
E: proteintech@ptglab.com
W: ptglab.com

This product is exclusively available under Proteintech Group brand and is not available to purchase from any other manufacturer.

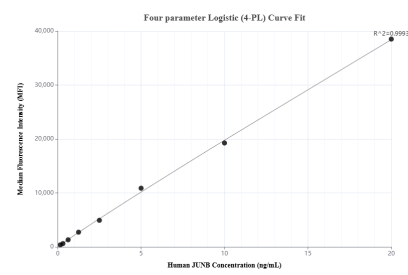
Selected Validation Data



Sandwich ELISA standard curve of MP01695-3, Human JUNB Recombinant Matched Antibody Pair - PBS only. 84922-3-PBS was coated to a plate as the capture antibody and incubated with serial dilutions of standard Ag0752. 84922-4-PBS was HRP conjugated as the detection antibody. Range: 39.1-2500 pg/mL.



The mean JUNB concentration was determined to be 2,110.1 pg/mL in MCF-7 cell extract based on a 1.2 mg/mL extract load and 998.0 ng/mL in HT-1080 cell extract based on a 1.4 mg/mL extract load.



Cytometric bead array standard curve of MP01695-1, JUNB Recombinant Matched Antibody Pair, PBS Only. Capture antibody: 84922-3-PBS. Detection antibody: 84922-2-PBS. Standard: Ag0752. Range: 0.156-20 ng/mL.