

For Research Use Only

PRICKLE1 Recombinant antibody, PBS Only (Detector)

Catalog Number: 84926-1-PBS



Basic Information

Catalog Number: 84926-1-PBS	GenBank Accession Number: BC114939	Purification Method: Protein A purification
Size: 100ug , Concentration: 1 mg/ml by Nanodrop;	GeneID (NCBI): 144165	CloneNo.: 242506A8
Source: Rabbit	UNIPROT ID: Q96MT3	
Isotype: IgG	Full Name: prickle homolog 1 (Drosophila)	
Immunogen Catalog Number: AG18407	Calculated MW: 831 aa, 94 kDa	
	Observed MW: 94 kDa	

Applications

Tested Applications:
WB, Cytometric bead array, Indirect ELISA

Species Specificity:
human

Product Information

84926-1-PBS targets PRICKLE1 as part of a matched antibody pair:

MP01670-2: 84926-3-PBS capture and 84926-1-PBS detection (validated in Cytometric bead array)

Unconjugated rabbit recombinant monoclonal antibody in PBS only (BSA and azide free) storage buffer at a concentration of 1 mg/mL, ready for conjugation. Created using Proteintech's proprietary in-house recombinant technology. Recombinant production enables unrivalled batch-to-batch consistency, easy scale-up, and future security of supply.

This conjugation ready format makes antibodies ideal for use in many applications including: ELISAs, multiplex assays requiring matched pairs, mass cytometry, and multiplex imaging applications. Antibody use should be optimized by the end user for each application and assay.

Background Information

PRICKLE1, also known as RILP, EPM1B, encodes a cytoplasmic protein with an N-terminal PET (Pk, Espinas, Testin) domain, three LIM domains and a C-terminal PKH (prickle homologous) domain. PRICKLE1 is expressed at the highest levels in placenta and lower levels in lung, liver, kidney and pancreas (PMID: 12525887). PRICKLE1 localizes to the nuclear membrane and has been implicated in the nuclear trafficking of the transcription repressors REST/NRSF and REST4. Mutations in PRICKLE1 have been linked to progressive myoclonus epilepsy (PMID: 18976727).

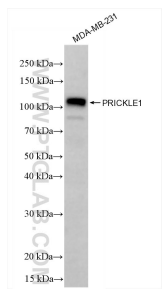
Storage

Storage:
Store at -80°C.
Storage Buffer:
PBS Only

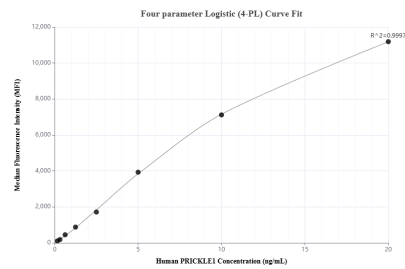
For technical support and original validation data for this product please contact:
T: 1 (888) 4PTGLAB (1-888-478-4522) (toll free in USA), or 1(312) 455-8498 (outside USA)
E: proteintech@ptglab.com
W: ptglab.com

This product is exclusively available under Proteintech Group brand and is not available to purchase from any other manufacturer.

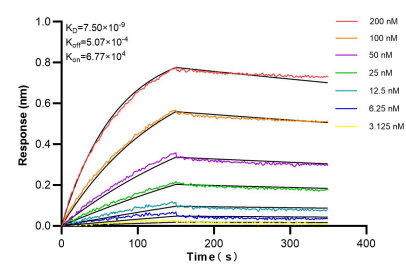
Selected Validation Data



MDA-MB-231 cells were subjected to SDS PAGE followed by western blot with 84926-1-RR (PRICKLE1 antibody) at dilution of 1:10000 incubated at room temperature for 1.5 hours. This data was developed using the same antibody clone with 84926-1-PBS in a different storage buffer formulation.



Cytometric bead array standard curve of MP01670-2, PRICKLE1 Recombinant Matched Antibody Pair, PBS Only. Capture antibody: 84926-3-PBS. Detection antibody: 84926-1-PBS. Standard: Ag18407. Range: 0.156-20 ng/mL.



Biolayer interferometry (BLI) kinetic assays of 84926-1-RR against Human PRICKLE1 were performed. The affinity constant is 7.50 nM.