

For Research Use Only

BCL11A Recombinant antibody, PBS Only (Capture)

Catalog Number: 84930-3-PBS



Basic Information

Catalog Number: 84930-3-PBS	GenBank Accession Number: BC021098	Purification Method: Protein A purification
Size: 100ug , Concentration: 1 mg/ml by Nanodrop;	GeneID (NCBI): 53335	CloneNo.: 242481F2
Source: Rabbit	UNIPROT ID: Q9H165	
Isotype: IgG	Full Name: B-cell CLL/lymphoma 11A (zinc finger protein)	
Immunogen Catalog Number: AG2187	Calculated MW: 835 aa, 91 kDa	
	Observed MW: 110-120 kDa	

Applications

Tested Applications:
WB, Cytometric bead array, Sandwich ELISA, Indirect ELISA, Sample test

Species Specificity:
human

Product Information

84930-3-PBS targets BCL11A as part of a matched antibody pair.

MP01680-2: 84930-3-PBS capture and 84930-4-PBS detection (validated in Cytometric bead array, Sandwich ELISA)

Unconjugated rabbit recombinant monoclonal antibody in PBS only (BSA and azide free) storage buffer at a concentration of 1 mg/mL, ready for conjugation. Created using Proteintech's proprietary in-house recombinant technology. Recombinant production enables unrivalled batch-to-batch consistency, easy scale-up, and future security of supply.

This conjugation ready format makes antibodies ideal for use in many applications including: ELISAs, multiplex assays requiring matched pairs, mass cytometry, and multiplex imaging applications. Antibody use should be optimized by the end user for each application and assay.

Storage

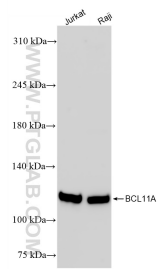
Storage:
Store at -80°C.

Storage Buffer:
PBS Only

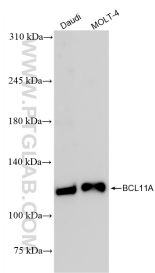
For technical support and original validation data for this product please contact:
T: 1 (888) 4PTGLAB (1-888-478-4522) (toll free in USA), or 1(312) 455-8498 (outside USA)
E: proteintech@ptglab.com
W: ptglab.com

This product is exclusively available under Proteintech Group brand and is not available to purchase from any other manufacturer.

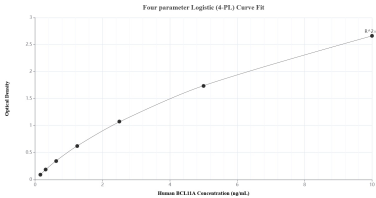
Selected Validation Data



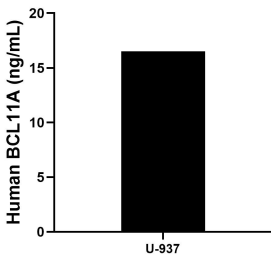
Various lysates were subjected to SDS PAGE followed by western blot with 84930-3-RR (BCL11A antibody) at dilution of 1:10000 incubated at room temperature for 1.5 hours. This data was developed using the same antibody clone with 84930-3-PBS in a different storage buffer formulation.



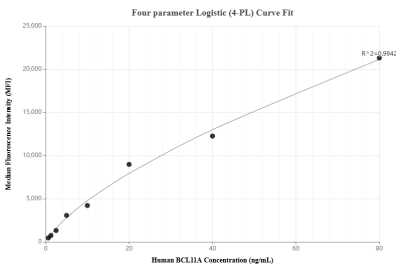
Various lysates were subjected to SDS PAGE followed by western blot with 84930-3-RR (BCL11A antibody) at dilution of 1:10000 incubated at room temperature for 1.5 hours. This data was developed using the same antibody clone with 84930-3-PBS in a different storage buffer formulation.



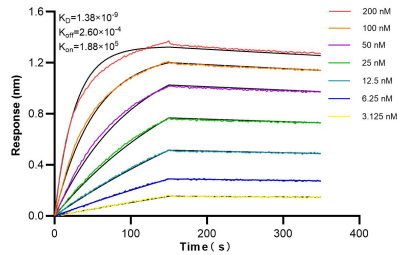
Sandwich ELISA standard curve of MP01680-2, Human BCL11A Recombinant Matched Antibody Pair - PBS only. 84930-3-PBS was coated to a plate as the capture antibody and incubated with serial dilutions of standard Ag2187. 84930-4-PBS was HRP conjugated as the detection antibody. Range: 0.156-10 ng/mL



The mean BCL11A concentration was determined to be 16.52 ng/mL in U-937 cell extract based on a 2.20 mg/mL extract load.



Cytometric bead array standard curve of MP01680-2, BCL11A Recombinant Matched Antibody Pair, PBS Only. Capture antibody: 84930-3-PBS. Detection antibody: 84930-4-PBS. Standard: Ag2187. Range: 0.625-80 ng/mL.



Bi-layer interferometry (BLI) kinetic assays of 84930-3-RR against Human BCL11A were performed. The affinity constant is 1.38 nM.