

For Research Use Only

BCL11A Recombinant antibody

Catalog Number: 84930-3-RR



Basic Information

Catalog Number:

84930-3-RR

Size:

100ul , Concentration: 1000 µg/ml by

Nanodrop;

Source:

Rabbit

Isotype:

IgG

Immunogen Catalog Number:

AG2187

GenBank Accession Number:

BC021098

GeneID (NCBI):

53335

UNIPROT ID:

Q9H165

Full Name:

B-cell CLL/lymphoma 11A (zinc finger protein)

Calculated MW:

835 aa, 91 kDa

Observed MW:

110-120 kDa

Purification Method:

Protein A purification

CloneNo.:

242481F2

Recommended Dilutions:

WB 1:5000-1:50000

Applications

Tested Applications:

WB, ELISA

Species Specificity:

human

Positive Controls:

WB : Jurkat cells, Daudi cells, Raji cells, MOLT-4 cells

Storage

Storage:

Store at -20°C. Stable for one year after shipment.

Storage Buffer:

PBS with 0.02% sodium azide and 50% glycerol pH 7.3.

Aliquoting is unnecessary for -20°C storage

*** 20ul sizes contain 0.1% BSA

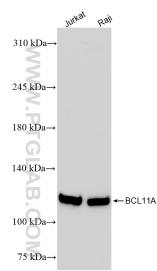
For technical support and original validation data for this product please contact:

T: 1 (888) 4PTGLAB (1-888-478-4522) (toll free in USA), or 1(312) 455-8498 (outside USA)

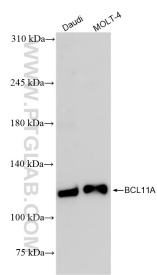
E: proteintech@ptglab.com
W: ptglab.com

This product is exclusively available under Proteintech Group brand and is not available to purchase from any other manufacturer.

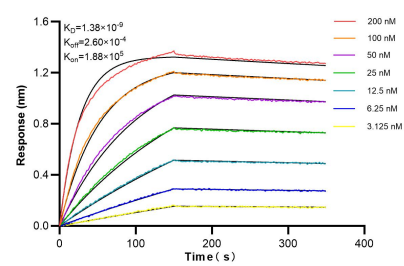
Selected Validation Data



Various lysates were subjected to SDS PAGE followed by western blot with 84930-3-RR (BCL11A antibody) at dilution of 1:10000 incubated at room temperature for 1.5 hours.



Various lysates were subjected to SDS PAGE followed by western blot with 84930-3-RR (BCL11A antibody) at dilution of 1:10000 incubated at room temperature for 1.5 hours.



Biolayer interferometry (BLI) kinetic assays of 84930-3-RR against Human BCL11A were performed. The affinity constant is 1.38 nM.