

For Research Use Only

ATG12 Recombinant antibody

Catalog Number: 84935-6-RR



Basic Information

Catalog Number: 84935-6-RR	GenBank Accession Number: BC012266	Purification Method: Protein A purification
Size: 100ul , Concentration: 1000 µg/ml by Nanodrop;	GeneID (NCBI): 9140	CloneNo.: 242483F1
Source: Rabbit	UNIPROT ID: O94817	Recommended Dilutions: WB 1:5000-1:50000
Isotype: IgG	Full Name: ATG12 autophagy related 12 homolog (S. cerevisiae)	
Immunogen Catalog Number: AG1791	Calculated MW: 15 kDa	
	Observed MW: 55 kDa	

Applications

Tested Applications: WB, ELISA	Positive Controls: WB : HEK-293 cells, HeLa cells, PC-3 cells
Species Specificity: human	

Background Information

ATG12, also named as APG12 and APG12L, belongs to the ATG12 family. It is required for autophagy. Free ATG12 is 15kd or 8kd. Conjugated to ATG5, ATG12-ATG5 show 48-55kd.

Storage

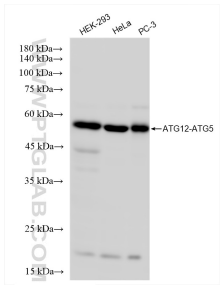
Storage:
Store at -20°C. Stable for one year after shipment.
Storage Buffer:
PBS with 0.02% sodium azide and 50% glycerol pH 7.3.
Aliquoting is unnecessary for -20°C storage

*** 20ul sizes contain 0.1% BSA

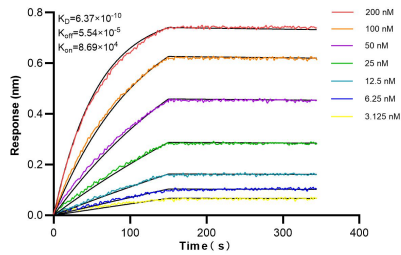
For technical support and original validation data for this product please contact:
T: 1 (888) 4PTGLAB (1-888-478-4522) (toll free in USA), or 1(312) 455-8498 (outside USA)
E: proteintech@ptglab.com
W: ptglab.com

This product is exclusively available under Proteintech Group brand and is not available to purchase from any other manufacturer.

Selected Validation Data



Various lysates were subjected to SDS PAGE followed by western blot with 84935-6-RR (ATG12 antibody) at dilution of 1:10000 incubated at room temperature for 1.5 hours.



Biolayer interferometry (BLI) kinetic assays of 84935-6-RR against Human ATG12 were performed. The affinity constant is 0.637 nM.