

For Research Use Only

PPP1CB Recombinant antibody, PBS Only

Catalog Number: 84938-5-PBS



Basic Information

Catalog Number:

84938-5-PBS

Size:

100ug, Concentration: 1 mg/ml by Nanodrop;

Source:

Rabbit

Isotype:

IgG

Immunogen Catalog Number:

AG0183

GenBank Accession Number:

BC002697

GeneID (NCBI):

5500

UNIPROT ID:

P62140

Full Name:

protein phosphatase 1, catalytic subunit, beta isoform

Calculated MW:

37 kDa

Observed MW:

35-37 kDa

Purification Method:

Protein A purification

CloneNo.:

242547H7

Applications

Tested Applications:

WB, IF/ICC, FC (Intra), Indirect ELISA

Species Specificity:

human, mouse, rat

Background Information

Protein phosphatase 1 (PP1) is the main eukaryotic protein serine/threonine phosphatase that regulates an enormous variety of cellular processes including protein-protein interactions, gene transcription, cell-cycle progression and apoptosis. It is a trimeric complex composed of a regulatory subunit, a variable subunit and a catalytic subunit. The catalytic subunit of PP1 (PP1c) can interact with amount of regulatory subunits in vivo that target it to particular subcellular locations and regulate its activity towards specific substrates.

Storage

Storage:

Store at -80°C.

Storage Buffer:

PBS Only

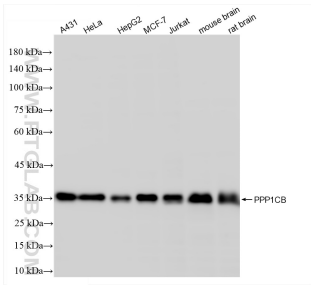
For technical support and original validation data for this product please contact:

T: 1 (888) 4PTGLAB (1-888-478-4522) (toll free in USA), or 1(312) 455-8498 (outside USA)

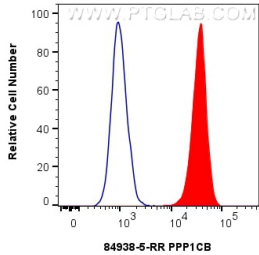
E: proteintech@ptglab.com
W: ptglab.com

This product is exclusively available under Proteintech Group brand and is not available to purchase from any other manufacturer.

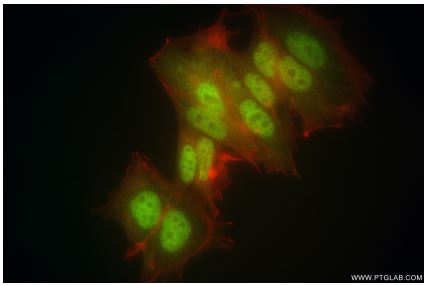
Selected Validation Data



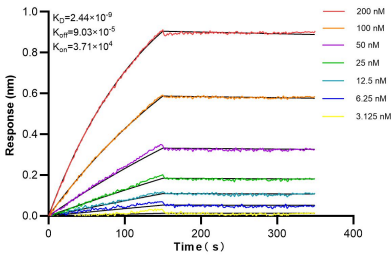
Various lysates were subjected to SDS PAGE followed by western blot with 84938-5-RR (PPP1CB antibody) at dilution of 1:10000 incubated at room temperature for 1.5 hours. This data was developed using the same antibody clone with 84938-5-PBS in a different storage buffer formulation.



1x10⁶ Jurkat cells were intracellularly stained with 0.25 ug PPP1CB Recombinant antibody (84938-5-RR, Clone:242547H7) and CoraLite®488-Conjugated Goat Anti-Rabbit IgG(H+L) (SA00013-2)(red), or 0.25 ug Rabbit IgG Isotype Control RecAb (98136-1-RR, Clone: 240953C9) (blue). Cells were fixed with 4% PFA and permeabilized with Flow Cytometry Perm Buffer (PF00011-C). This data was developed using the same antibody clone with 84938-5-PBS in a



Immunofluorescent analysis of (4% PFA) fixed MCF-7 cells using PPP1CB antibody (84938-5-RR, Clone: 242547H7) at dilution of 1:500 and CoraLite®488-Conjugated Goat Anti-Rabbit IgG(H+L) (SA00013-2), CL594-Phalloidin (red). This data was developed using the same antibody clone with 84938-5-PBS in a different storage buffer formulation.



Biolayer interferometry (BLI) kinetic assays of 84938-5-RR against Human PPP1CB were performed. The affinity constant is 2.44 nM.