

For Research Use Only

# SSBP1 Recombinant antibody, PBS Only (Detector)

Catalog Number: 84939-3-PBS



## Basic Information

<b>Catalog Number:</b> 84939-3-PBS	<b>GenBank Accession Number:</b> BC000895	<b>Purification Method:</b> Protein A purification
<b>Size:</b> 100ug , Concentration: 1 mg/ml by Nanodrop;	<b>GeneID (NCBI):</b> 6742	<b>CloneNo.:</b> 242519C5
<b>Source:</b> Rabbit	<b>UNIPROT ID:</b> Q04837	
<b>Isotype:</b> IgG	<b>Full Name:</b> single-stranded DNA binding protein 1	
<b>Immunogen Catalog Number:</b> AG2860	<b>Calculated MW:</b> 148 aa, 17 kDa	
	<b>Observed MW:</b> 17 kDa	

## Applications

**Tested Applications:**  
WB, Cytometric bead array, Indirect ELISA

**Species Specificity:**  
human

## Product Information

84939-3-PBS targets SSBP1 as part of a matched antibody pair:

MP01710-1: 84939-2-PBS capture and 84939-3-PBS detection (validated in Cytometric bead array)

MP01710-2: 84939-1-PBS capture and 84939-3-PBS detection (validated in Cytometric bead array)

Unconjugated rabbit recombinant monoclonal antibody in PBS only (BSA and azide free) storage buffer at a concentration of 1 mg/mL, ready for conjugation. Created using Proteintech's proprietary in-house recombinant technology. Recombinant production enables unrivalled batch-to-batch consistency, easy scale-up, and future security of supply.

This conjugation ready format makes antibodies ideal for use in many applications including: ELISAs, multiplex assays requiring matched pairs, mass cytometry, and multiplex imaging applications. Antibody use should be optimized by the end user for each application and assay.

## Background Information

SSBP1 is a housekeeping gene involved in mitochondrial biogenesis. It binds preferentially and cooperatively to ss-DNA in the maintenance of genome stability. SSBP1 acted as a homotetramer to stabilize the displaced single strand of the normal and expanded displacement loop (D loop) during mtDNA replication, thus preventing formation of secondary single-stranded DNA structures, which could stop the gamma-DNA polymerase.

## Storage

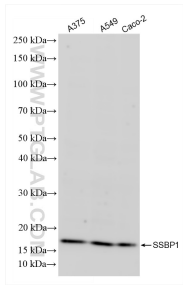
**Storage:**  
Store at -80°C.

**Storage Buffer:**  
PBS Only

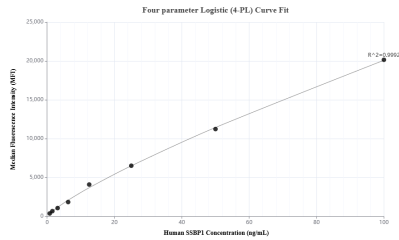
For technical support and original validation data for this product please contact:  
T: 1 (888) 4PTGLAB (1-888-478-4522) (toll free in USA), or 1(312) 455-8498 (outside USA)  
E: [proteintech@ptglab.com](mailto:proteintech@ptglab.com)  
W: [ptglab.com](http://ptglab.com)

This product is exclusively available under Proteintech Group brand and is not available to purchase from any other manufacturer.

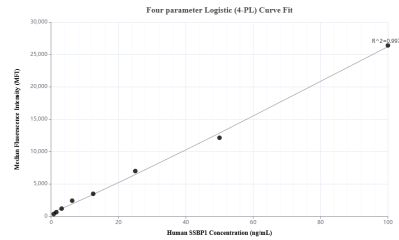
## Selected Validation Data



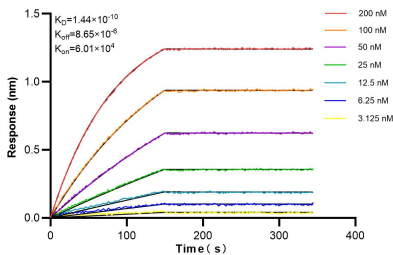
Various lysates were subjected to SDS PAGE followed by western blot with 84939-3-RR (SSBP1 antibody) at dilution of 1:10000 incubated at room temperature for 1.5 hours. This data was developed using the same antibody clone with 84939-3-PBS in a different storage buffer formulation.



Cytometric bead array standard curve of MP01710-1, SSBP1 Recombinant Matched Antibody Pair, PBS Only. Capture antibody: 84939-2-PBS. Detection antibody: 84939-3-PBS. Standard: Ag2860. Range: 0.781-100 ng/mL.



Cytometric bead array standard curve of MP01710-2, SSBP1 Recombinant Matched Antibody Pair, PBS Only. Capture antibody: 84939-1-PBS. Detection antibody: 84939-3-PBS. Standard: Ag2860. Range: 0.781-100 ng/mL.



Biolayer interferometry (BLI) kinetic assays of 84939-3-RR against Human SSBP1 were performed. The affinity constant is 0.144 nM.