

For Research Use Only

SSBP1 Recombinant antibody

Catalog Number: 84939-3-RR



Basic Information

Catalog Number: 84939-3-RR	GenBank Accession Number: BC000895	Purification Method: Protein A purification
Size: 100ul , Concentration: 1000 µg/ml by Nanodrop;	GeneID (NCBI): 6742	CloneNo.: 242519C5
Source: Rabbit	UNIPROT ID: Q04837	Recommended Dilutions: WB 1:5000-1:50000
Isotype: IgG	Full Name: single-stranded DNA binding protein 1	
Immunogen Catalog Number: AG2860	Calculated MW: 148 aa, 17 kDa	
	Observed MW: 17 kDa	

Applications

Tested Applications: WB, ELISA	Positive Controls: WB : A375 cells, A549 cells, Caco-2 cells
Species Specificity: human	

Background Information

SSBP1 is a housekeeping gene involved in mitochondrial biogenesis. it binds preferentially and cooperatively to ss-DNA in the maintenance of genome stability. SSBP1 acted as a homotetramer to stabilize the displaced single strand of the normal and expanded displacement loop (D loop) during mtDNA replication, thus preventing formation of secondary single-stranded DNA structures, which could stop the gamma-DNA polymerase.

Storage

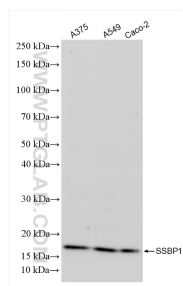
Storage:
Store at -20°C. Stable for one year after shipment.
Storage Buffer:
PBS with 0.02% sodium azide and 50% glycerol pH 7.3.
Aliquoting is unnecessary for -20°C storage

*** 20ul sizes contain 0.1% BSA

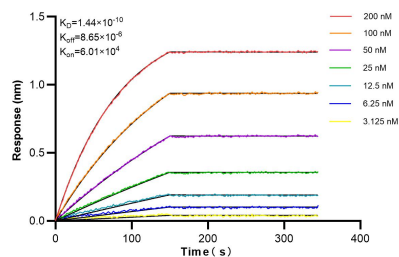
For technical support and original validation data for this product please contact:
T: 1 (888) 4PTGLAB (1-888-478-4522) (toll free in USA), or 1(312) 455-8498 (outside USA)
E: proteintech@ptglab.com
W: ptglab.com

This product is exclusively available under Proteintech Group brand and is not available to purchase from any other manufacturer.

Selected Validation Data



Various lysates were subjected to SDS PAGE followed by western blot with 84939-3-RR (SSBP1 antibody) at dilution of 1:10000 incubated at room temperature for 1.5 hours.



Biolayer interferometry (BLI) kinetic assays of 84939-3-RR against Human SSBP1 were performed. The affinity constant is 0.144 nM.