

For Research Use Only

PLCG1 Recombinant antibody

Catalog Number: 84941-4-RR



Basic Information

Catalog Number: 84941-4-RR	GenBank Accession Number: 5335	Purification Method: Protein A purification
Size: 100ul , Concentration: 1000 µg/ml by Nanodrop;	GeneID (NCBI): 5335	CloneNo.: 242529B11
Source: Rabbit	UNIPROT ID: P19174	Recommended Dilutions: WB 1:5000-1:50000
Isotype: IgG	Full Name: phospholipase C, gamma 1	
Immunogen Catalog Number: AG27218	Calculated MW: 149 kDa	
	Observed MW: 149 kDa	

Applications

Tested Applications: WB, ELISA	Positive Controls: WB : HEK-293 cells, Jurkat cells, MCF-7 cells, C6 cells, mouse brain tissue, rat brain tissue
Species Specificity: human, mouse, rat	

Background Information

Phosphoinositide phospholipase C-gamma-1 (PLCG1) which belongs to the phosphoinositide-specific phospholipase C (PLC) family, is activated by many extracellular stimuli including hormones, neurotransmitters, and growth factors and modulates several cellular and physiological functions necessary for tumorigenesis such as cell survival, migration, invasion, and angiogenesis by generating inositol 1,4,5-triphosphate (IP3) and diacylglycerol (DAG) via hydrolysis of phosphatidylinositol 4,5-bisphosphate (PIP2) (PMID: 9242915). Phosphorylation is one of the key mechanisms that regulate the activity of PLC. PLCγ is activated by both receptor and non-receptor tyrosine kinases (PMID: 2472218). PLCγ forms a complex with EGF and PDGF receptors, which leads to the phosphorylation of PLCγ at Tyr771, 783, and 1248 (PMID: 1708307). It has also been shown that PKA-mediated phosphorylation at Ser1248 is inhibitory to PLCγ 1 tyrosine phosphorylation and phospholipase activity in CD3-treated Jurkat cells (PMID: 1370476), suggesting that Ser1248 may be an allosteric regulator of PLCγ 1 activity.

Storage

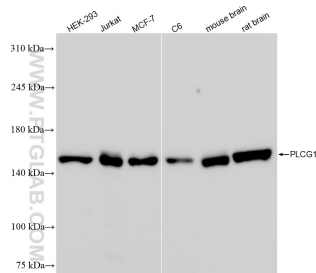
Storage:
Store at -20°C. Stable for one year after shipment.
Storage Buffer:
PBS with 0.02% sodium azide and 50% glycerol pH 7.3.
Aliquoting is unnecessary for -20°C storage

*** 20ul sizes contain 0.1% BSA

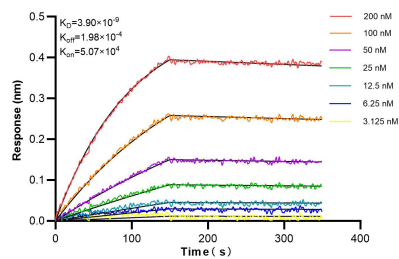
For technical support and original validation data for this product please contact:
T: 1 (888) 4PTGLAB (1-888-478-4522) (toll free in USA), or 1(312) 455-8498 (outside USA)
E: proteintech@ptglab.com
W: ptglab.com

This product is exclusively available under Proteintech Group brand and is not available to purchase from any other manufacturer.

Selected Validation Data



Various lysates were subjected to SDS PAGE followed by western blot with 84941-4-RR (PLCG1 antibody) at dilution of 1:10000 incubated at room temperature for 1.5 hours.



Biolayer interferometry (BLI) kinetic assays of 84941-4-RR against Human PLCG1 were performed. The affinity constant is 3.90 nM.