

For Research Use Only

# CD93 Recombinant antibody, PBS Only (Capture/Detector)

Catalog Number: 84945-2-PBS



## Basic Information

**Catalog Number:**

84945-2-PBS

**Size:**

100ug, Concentration: 1 mg/ml by Nanodrop;

**Source:**

Rabbit

**Isotype:**

IgG

**GenBank Accession Number:**

NM\_012072.3

**GeneID (NCBI):**

22918

**UNIPROT ID:**

Q9NPY3

**Full Name:**

CD93 molecule

**Calculated MW:**

69 kDa

**Purification Method:**

Protein A purification

**CloneNo.:**

242464G6

## Applications

**Tested Applications:**

Cytometric bead array, Sandwich ELISA, Indirect ELISA, Sample test

**Species Specificity:**

human

## Product Information

84945-2-PBS targets CD93 as part of a matched antibody pair:

MP01683-2: 84945-1-PBS capture and 84945-2-PBS detection (validated in Cytometric bead array)

MP01683-3: 84945-2-PBS capture and 84945-3-PBS detection (validated in Sandwich ELISA)

Unconjugated rabbit recombinant monoclonal antibody in PBS only (BSA and azide free) storage buffer at a concentration of 1 mg/mL, ready for conjugation. Created using Proteintech's proprietary in-house recombinant technology. Recombinant production enables unrivalled batch-to-batch consistency, easy scale-up, and future security of supply.

This conjugation ready format makes antibodies ideal for use in many applications including: ELISAs, multiplex assays requiring matched pairs, mass cytometry, and multiplex imaging applications. Antibody use should be optimized by the end user for each application and assay.

## Storage

**Storage:**

Store at -80°C.

**Storage Buffer:**

PBS Only

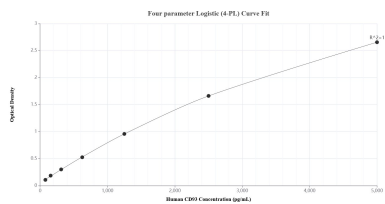
For technical support and original validation data for this product please contact:

T: 1 (888) 4PTGLAB (1-888-478-4522) (toll free in USA), or 1(312) 455-8498 (outside USA)

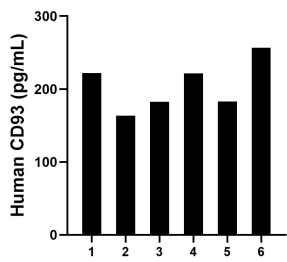
E: [proteintech@ptglab.com](mailto:proteintech@ptglab.com)  
W: [ptglab.com](http://ptglab.com)

This product is exclusively available under Proteintech Group brand and is not available to purchase from any other manufacturer.

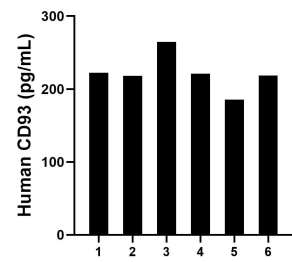
Selected Validation Data



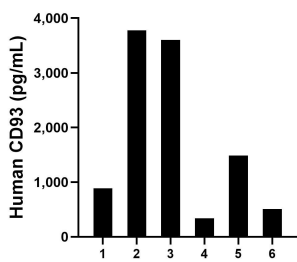
Sandwich ELISA standard curve of MP01683-3, Human CD93 Recombinant Matched Antibody Pair - PBS only. 84945-2-PBS was coated to a plate as the capture antibody and incubated with serial dilutions of standard Eg2794. 84945-3-PBS was HRP conjugated as the detection antibody. Range: 78.1-5000 pg/mL.



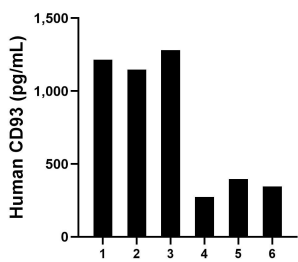
Serum of six individual healthy human donors was measured. The CD93 concentration of detected samples was determined to be 204.8 pg/mL with a range of 163.5-256.8 pg/mL.



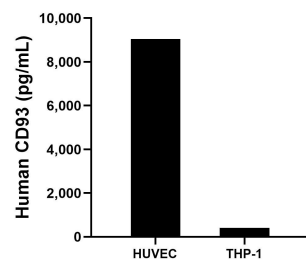
Plasma of six individual healthy human donors was measured. The CD93 concentration of detected samples was determined to be 221.7 pg/mL with a range of 185.4-264.8 pg/mL.



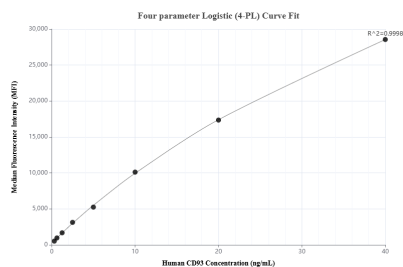
Urine of six individual healthy human donors was measured. The CD93 concentration of detected samples was determined to be 1,768.1 pg/mL with a range of 340.0-3,778.7 pg/mL.



Saliva of six individual healthy human donors was measured. The CD93 concentration of detected samples was determined to be 776.7 pg/mL with a range of 273.6-1,280.6 pg/mL.



HUVEC and THP-1 cells were cultured in DMEM supplemented with 10% fetal bovine serum, 2.5 mM L-glutamine, 100 U/mL penicillin and 100 µg/mL streptomycin sulfate, respectively. Aliquots of the cell culture supernate were removed, assayed for human CD93, and measured 9,051.4 pg/mL and 406.3 pg/mL, respectively.



Cytometric bead array standard curve of MP01683-2, CD93 Recombinant Matched Antibody Pair, PBS Only. Capture antibody: 84945-1-PBS. Detection antibody: 84945-2-PBS. Standard: Eg2794. Range: 0.313-40 ng/mL.