

For Research Use Only

TEX264 Recombinant antibody, PBS Only

Catalog Number: 84946-5-PBS



Basic Information

Catalog Number:

84946-5-PBS

Size:

100ug, Concentration: 1 mg/ml by Nanodrop;

Source:

Rabbit

Isotype:

IgG

Immunogen Catalog Number:

AG23027

GenBank Accession Number:

BC008742

GeneID (NCBI):

51368

UNIPROT ID:

Q9Y6I9

Full Name:

testis expressed 264

Calculated MW:

313 aa, 34 kDa

Observed MW:

37-40 kDa

Purification Method:

Protein A purification

CloneNo.:

242500B3

Applications

Tested Applications:

WB, Indirect ELISA

Species Specificity:

human, mouse

Background Information

TEX264 (testes expressed gene 264) is a single-pass transmembrane protein, consisting of an N-terminal hydrophobic region, a gyrase inhibitory (GyrI)-like domain, and a loosely structured C terminus. TEX264 was first identified as an endoplasmic reticulum (ER)-resident Atg8-family-binding protein that mediates the degradation of portions of the ER during starvation (i.e., reticulophagy). TEX264 was identified as a cofactor of VCP/p97 ATPase that promotes the repair of covalently trapped TOP1 (DNA topoisomerase 1)-DNA crosslinks.

Storage

Storage:

Store at -80°C.

Storage Buffer:

PBS Only

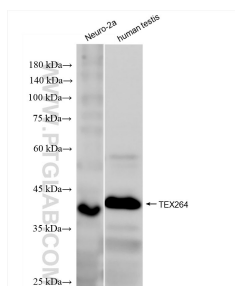
For technical support and original validation data for this product please contact:

T: 1 (888) 4PTGLAB (1-888-478-4522) (toll free in USA), or 1(312) 455-8498 (outside USA)

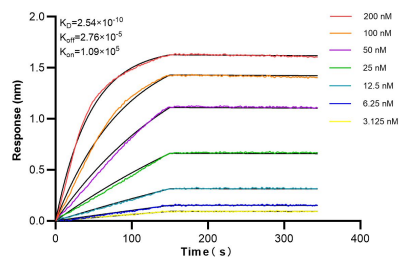
E: proteintech@ptglab.com
W: ptglab.com

This product is exclusively available under Proteintech Group brand and is not available to purchase from any other manufacturer.

Selected Validation Data



Various lysates were subjected to SDS PAGE followed by western blot with 84946-5-RR (TEX264 antibody) at dilution of 1:3000 incubated at room temperature for 1.5 hours. This data was developed using the same antibody clone with 84946-5-PBS in a different storage buffer formulation.



Biolayer interferometry (BLI) kinetic assays of 84946-5-RR against Human TEX264 were performed. The affinity constant is 0.254 nM.