

For Research Use Only

RPS3 Recombinant antibody, PBS Only (Detector)

Catalog Number: 84947-2-PBS



Basic Information

Catalog Number: 84947-2-PBS	GenBank Accession Number: BC003137	Purification Method: Protein A purification
Size: 100ug , Concentration: 1 mg/ml by Nanodrop;	GeneID (NCBI): 6188	CloneNo.: 242504B5
Source: Rabbit	UNIPROT ID: P23396	
Isotype: IgG	Full Name: ribosomal protein S3	
Immunogen Catalog Number: AG7346	Calculated MW: 27 kDa	

Applications

Tested Applications:
Cytometric bead array, Sandwich ELISA, Indirect ELISA, Sample test

Species Specificity:
human

Product Information

84947-2-PBS targets RPS3 as part of a matched antibody pair:

MP01686-1: 84947-1-PBS capture and 84947-2-PBS detection (validated in Cytometric bead array)

MP01686-2: 84947-3-PBS capture and 84947-2-PBS detection (validated in Cytometric bead array, Sandwich ELISA)

Unconjugated rabbit recombinant monoclonal antibody in PBS only (BSA and azide free) storage buffer at a concentration of 1 mg/mL, ready for conjugation. Created using Proteintech's proprietary in-house recombinant technology. Recombinant production enables unrivalled batch-to-batch consistency, easy scale-up, and future security of supply.

This conjugation ready format makes antibodies ideal for use in many applications including: ELISAs, multiplex assays requiring matched pairs, mass cytometry, and multiplex imaging applications. Antibody use should be optimized by the end user for each application and assay.

Storage

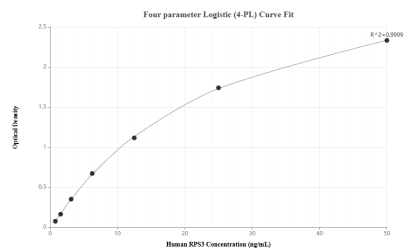
Storage:
Store at -80°C.

Storage Buffer:
PBS Only

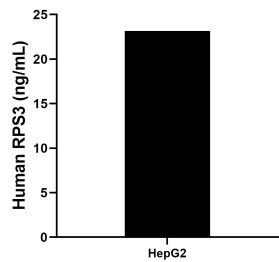
For technical support and original validation data for this product please contact:
T: 1 (888) 4PTGLAB (1-888-478-4522) (toll free in USA), or 1(312) 455-8498 (outside USA)
E: proteintech@ptglab.com
W: ptglab.com

This product is exclusively available under Proteintech Group brand and is not available to purchase from any other manufacturer.

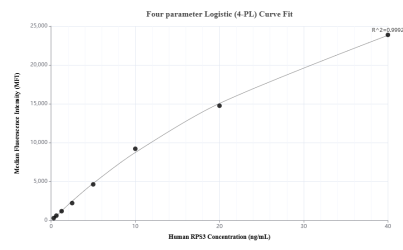
Selected Validation Data



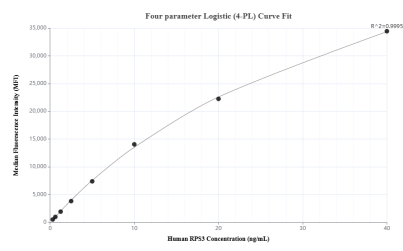
Sandwich ELISA standard curve of MP01686-2, Human RPS3 Recombinant Matched Antibody Pair - PBS only. 84947-3-PBS was coated to a plate as the capture antibody and incubated with serial dilutions of standard Ag7346. 84947-2-PBS was HRP conjugated as the detection antibody. Range: 0.781-50 ng/mL



The mean RPS3 concentration was determined to be 23.17 ng/mL in HepG2 cell extract based on a 1.0 mg/mL extract load.



Cytometric bead array standard curve of MP01686-2, RPS3 Recombinant Matched Antibody Pair, PBS Only. Capture antibody: 84947-3-PBS. Detection antibody: 84947-2-PBS. Standard: Ag7346. Range: 0.313-40 ng/mL



Cytometric bead array standard curve of MP01686-1, RPS3 Recombinant Matched Antibody Pair, PBS Only. Capture antibody: 84947-1-PBS. Detection antibody: 84947-2-PBS. Standard: Ag7346. Range: 0.313-40 ng/mL