

For Research Use Only

LARP7 Recombinant antibody, PBS Only (Detector)

Catalog Number: 84950-2-PBS



Basic Information

Catalog Number: 84950-2-PBS	GenBank Accession Number: BC006981	Purification Method: Protein A purification
Size: 100ug , Concentration: 1 mg/ml by Nanodrop;	GeneID (NCBI): 51574	CloneNo.: 242561C6
Source: Rabbit	UNIPROT ID: Q4G0J3	
Isotype: IgG	Full Name: La ribonucleoprotein domain family, member 7	
Immunogen Catalog Number: AG10850	Calculated MW: 582 aa, 67 kDa	

Applications

Tested Applications:
Cytometric bead array, Indirect ELISA

Species Specificity:
human

Product Information

84950-2-PBS targets LARP7 as part of a matched antibody pair:

MP01697-1: 84950-3-PBS capture and 84950-2-PBS detection (validated in Cytometric bead array)

Unconjugated rabbit recombinant monoclonal antibody in PBS only (BSA and azide free) storage buffer at a concentration of 1 mg/mL, ready for conjugation. Created using Proteintech's proprietary in-house recombinant technology. Recombinant production enables unrivalled batch-to-batch consistency, easy scale-up, and future security of supply.

This conjugation ready format makes antibodies ideal for use in many applications including: ELISAs, multiplex assays requiring matched pairs, mass cytometry, and multiplex imaging applications. Antibody use should be optimized by the end user for each application and assay.

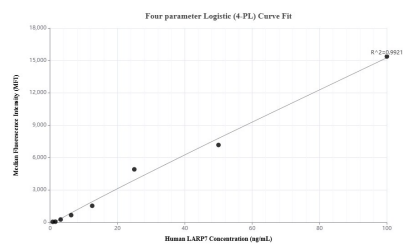
Storage

Storage:
Store at -80°C.
Storage Buffer:
PBS Only

For technical support and original validation data for this product please contact:
T: 1 (888) 4PTGLAB (1-888-478-4522) (toll free in USA), or 1(312) 455-8498 (outside USA)
E: proteintech@ptglab.com
W: ptglab.com

This product is exclusively available under Proteintech Group brand and is not available to purchase from any other manufacturer.

Selected Validation Data



Cytometric bead array standard curve of MP01697-1, LARP7 Recombinant Matched Antibody Pair, PBS Only. Capture antibody: 84950-3-PBS. Detection antibody: 84950-2-PBS. Standard: Ag10850. Range: 0.781-100 ng/mL.