

For Research Use Only

# LARP7 Recombinant antibody, PBS Only (Capture)

Catalog Number: 84950-3-PBS



## Basic Information

<b>Catalog Number:</b> 84950-3-PBS	<b>GenBank Accession Number:</b> BC006981	<b>Purification Method:</b> Protein A purification
<b>Size:</b> 100ug , Concentration: 1 mg/ml by Nanodrop;	<b>GeneID (NCBI):</b> 51574	<b>CloneNo.:</b> 242561F5
<b>Source:</b> Rabbit	<b>UNIPROT ID:</b> Q4G0J3	
<b>Isotype:</b> IgG	<b>Full Name:</b> La ribonucleoprotein domain family, member 7	
<b>Immunogen Catalog Number:</b> AG10850	<b>Calculated MW:</b> 582 aa, 67 kDa	
	<b>Observed MW:</b> 67 kDa	

## Applications

**Tested Applications:**  
IF/ICC, Cytometric bead array, Indirect ELISA

**Species Specificity:**  
human

## Product Information

84950-3-PBS targets LARP7 as part of a matched antibody pair:

MP01697-1: 84950-3-PBS capture and 84950-2-PBS detection (validated in Cytometric bead array)

MP01697-2: 84950-3-PBS capture and 84950-1-PBS detection (validated in Cytometric bead array)

Unconjugated rabbit recombinant monoclonal antibody in PBS only (BSA and azide free) storage buffer at a concentration of 1 mg/mL, ready for conjugation. Created using Proteintech's proprietary in-house recombinant technology. Recombinant production enables unrivalled batch-to-batch consistency, easy scale-up, and future security of supply.

This conjugation ready format makes antibodies ideal for use in many applications including: ELISAs, multiplex assays requiring matched pairs, mass cytometry, and multiplex imaging applications. Antibody use should be optimized by the end user for each application and assay.

## Background Information

LARP7 belongs to the LARP RNA-binding protein family, which includes the lupus LA antigen gene, and modulates the metabolism and function of a variety of RNA species [PMID:20138158]. LARP7 binds to the 7SK RNP complex, and sequesters the positive transcription elongation factor b (P-TEFb) in an inactive form, preventing RNA polymerase II phosphorylation and subsequent transcriptional elongation.[PMID:19416841].

## Storage

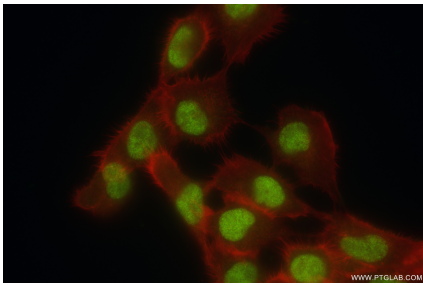
**Storage:**  
Store at -80°C.

**Storage Buffer:**  
PBS Only

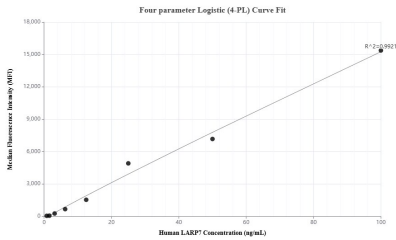
For technical support and original validation data for this product please contact:  
T: 1 (888) 4PTGLAB (1-888-478-4522) (toll free in USA), or 1(312) 455-8498 (outside USA)  
E: [proteintech@ptglab.com](mailto:proteintech@ptglab.com)  
W: [ptglab.com](http://ptglab.com)

This product is exclusively available under Proteintech Group brand and is not available to purchase from any other manufacturer.

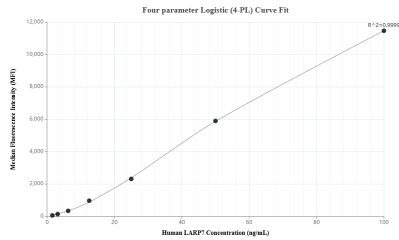
## Selected Validation Data



Immunofluorescent analysis of (4% PFA) fixed A431 cells using LARP7 antibody (84950-3-RR, Clone: 242561F5 ) at dilution of 1:500 and CoraLite®488-Conjugated Goat Anti-Rabbit IgG(H+L) (SA00013-2), CLS94-Phalloidin (red). This data was developed using the same antibody clone with 84950-3-PBS in a different storage buffer formulation.



Cytometric bead array standard curve of MP01697-1, LARP7 Recombinant Matched Antibody Pair, PBS Only. Capture antibody: 84950-3-PBS. Detection antibody: 84950-2-PBS. Standard: Ag10850. Range: 0.781-100 ng/mL.



Cytometric bead array standard curve of MP01697-2, LARP7 Recombinant Matched Antibody Pair, PBS Only. Capture antibody: 84950-3-PBS. Detection antibody: 84950-1-PBS. Standard: Ag10850. Range: 1.563-100 ng/mL.