

For Research Use Only

Bacteriophage t7 T7 RNA polymerase Recombinant antibody, PBS Only (Detector)

Catalog Number: 84959-3-PBS



Basic Information

| | | |
|---|---|---|
| Catalog Number: 84959-3-PBS | GenBank Accession Number: NP_041960 | Purification Method: Protein A purification |
| Size: 100ug , Concentration: 1 mg/ml by Nanodrop; | GeneID (NCBI): 1261050 | CloneNo.: 242544G7 |
| Source: Rabbit | UNIPROT ID: P00573 | |
| Isotype: IgG | Full Name: T7 RNA polymerase | |
| Immunogen Catalog Number: AG32001 | Calculated MW: 99 kDa | |

Applications

Tested Applications:
Cytometric bead array, Sandwich ELISA, Indirect ELISA, Sample test

Species Specificity:
bacteriophage t7

Product Information

84959-3-PBS targets T7 RNA polymerase as part of a matched antibody pair:

MP01722-1: 84959-2-PBS capture and 84959-3-PBS detection (validated in Cytometric bead array)

MP01722-2: 84959-1-PBS capture and 84959-3-PBS detection (validated in Cytometric bead array, Sandwich ELISA)

Unconjugated rabbit recombinant monoclonal antibody in PBS only (BSA and azide free) storage buffer at a concentration of 1 mg/mL, ready for conjugation. Created using Proteintech's proprietary in-house recombinant technology. Recombinant production enables unrivalled batch-to-batch consistency, easy scale-up, and future security of supply.

This conjugation ready format makes antibodies ideal for use in many applications including: ELISAs, multiplex assays requiring matched pairs, mass cytometry, and multiplex imaging applications. Antibody use should be optimized by the end user for each application and assay.

Storage

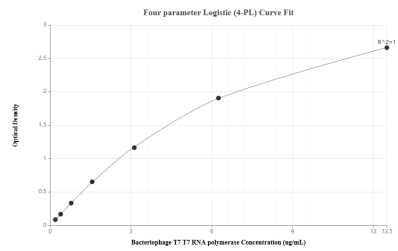
Storage:
Store at -80°C.

Storage Buffer:
PBS only

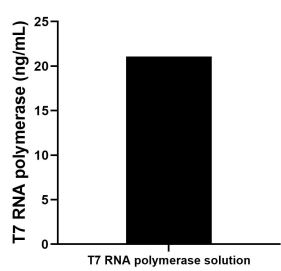
For technical support and original validation data for this product please contact:
T: 1 (888) 4PTGLAB (1-888-478-4522) (toll free in USA), or 1(312) 455-8498 (outside USA)
E: proteintech@ptglab.com
W: ptglab.com

This product is exclusively available under Proteintech Group brand and is not available to purchase from any other manufacturer.

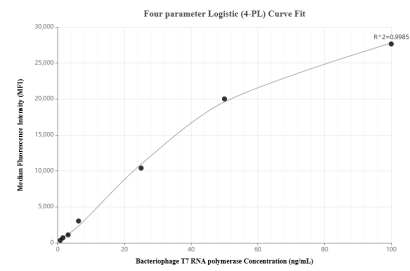
Selected Validation Data



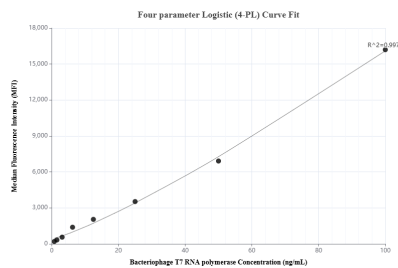
Sandwich ELISA standard curve of MP01722-2, Bacteriophage T7 T7 RNA polymerase Recombinant Matched Antibody Pair - PBS only. 84959-1-PBS was coated to a plate as the capture antibody and incubated with serial dilutions of standard Ag32001. 84959-3-PBS was HRP conjugated as the detection antibody. Range: 0.195-12.5 ng/mL



The mean T7 RNA polymerase concentration was determined to be 21.07 ng/mL in T7 RNA polymerase solution (CW3393) bought from CW BIO.



Cytometric bead array standard curve of MP01722-1, BACTERIOPHAGE T7 T7 RNA polymerase Recombinant Matched Antibody Pair, PBS Only. Capture antibody: 84959-2-PBS. Detection antibody: 84959-3-PBS. Standard: Ag32001. Range: 0.781-100 ng/mL



Cytometric bead array standard curve of MP01722-2, BACTERIOPHAGE T7 T7 RNA polymerase Recombinant Matched Antibody Pair, PBS Only. Capture antibody: 84959-1-PBS. Detection antibody: 84959-3-PBS. Standard: Ag32001. Range: 0.781-100 ng/mL