

For Research Use Only

PTH Recombinant antibody, PBS Only (Detector)

Catalog Number: 84960-3-PBS



Basic Information

Catalog Number: 84960-3-PBS	GenBank Accession Number: NM_000315.4	Purification Method: Protein A purification
Size: 100ug , Concentration: 1 mg/ml by Nanodrop;	GeneID (NCBI): 5741	CloneNo.: 242608F7
Source: Rabbit	UNIPROT ID: P01270	
Isotype: IgG	Full Name: parathyroid hormone	
	Calculated MW: 13kDa	

Applications

Tested Applications:
Cytometric bead array, Sandwich ELISA, Indirect ELISA, Sample test

Species Specificity:
human

Product Information

84960-3-PBS targets PTH as part of a matched antibody pair:

MP01717-1: 84960-1-PBS capture and 84960-3-PBS detection (validated in Cytometric bead array)

MP01717-3: 84960-4-PBS capture and 84960-3-PBS detection (validated in Sandwich ELISA)

Unconjugated rabbit recombinant monoclonal antibody in PBS only (BSA and azide free) storage buffer at a concentration of 1 mg/mL, ready for conjugation. Created using Proteintech's proprietary in-house recombinant technology. Recombinant production enables unrivalled batch-to-batch consistency, easy scale-up, and future security of supply.

This conjugation ready format makes antibodies ideal for use in many applications including: ELISAs, multiplex assays requiring matched pairs, mass cytometry, and multiplex imaging applications. Antibody use should be optimized by the end user for each application and assay.

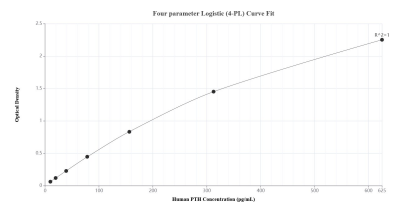
Storage

Storage:
Store at -80°C.
Storage Buffer:
PBS Only

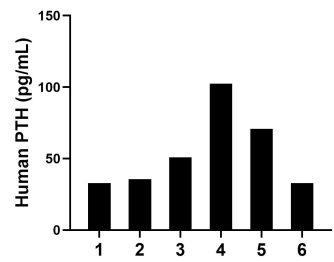
For technical support and original validation data for this product please contact:
T: 1 (888) 4PTGLAB (1-888-478-4522) (toll free in USA), or 1(312) 455-8498 (outside USA)
E: proteintech@ptglab.com
W: ptglab.com

This product is exclusively available under Proteintech Group brand and is not available to purchase from any other manufacturer.

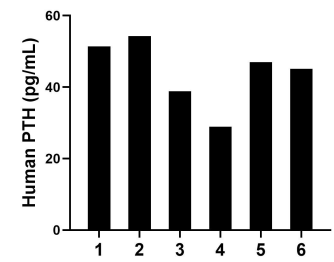
Selected Validation Data



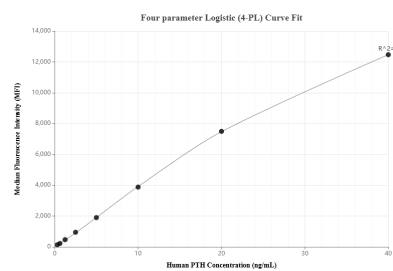
Sandwich ELISA standard curve of MP01717-3, Human PTH Recombinant Matched Antibody Pair - PBS only. 84960-4-PBS was coated to a plate as the capture antibody and incubated with serial dilutions of standard Eg3191. 84960-3-PBS was HRP conjugated as the detection antibody. Range: 9.77-625 pg/mL



Plasma of six individual healthy human donors was measured. The PTH concentration of detected samples was determined to be 54.2 ng/mL with a range of 32.7-102.4 pg/mL



Serum of six individual healthy human donors was measured. The PTH concentration of detected samples was determined to be 44.3 pg/mL with a range of 28.9-54.3 pg/mL



Cytometric bead array standard curve of MP01717-1, PTH Recombinant Matched Antibody Pair, PBS Only. Capture antibody: 84960-1-PBS. Detection antibody: 84960-3-PBS. Standard: Eg3191. Range: 0.313-40 ng/mL