

For Research Use Only

# PTH Recombinant antibody, PBS Only (Capture)

Catalog Number: 84960-4-PBS



## Basic Information

|   |   |   |
|---|---|---|
| <b>Catalog Number:</b><br>84960-4-PBS                       | <b>GenBank Accession Number:</b><br>NM_000315.4 | <b>Purification Method:</b><br>Protein A purification |
| <b>Size:</b><br>100ug , Concentration: 1 mg/ml by Nanodrop; | <b>GeneID (NCBI):</b><br>5741                   | <b>CloneNo.:</b><br>242608F8                          |
| <b>Source:</b><br>Rabbit                                    | <b>UNIPROT ID:</b><br>P01270                    |   |
| <b>Isotype:</b><br>IgG                                      | <b>Full Name:</b><br>parathyroid hormone        |   |
|   | <b>Calculated MW:</b><br>13kDa                  |   |

## Applications

**Tested Applications:**  
WB, Sandwich ELISA, Indirect ELISA, Sample test

**Species Specificity:**  
human

## Product Information

84960-4-PBS targets PTH as part of a matched antibody pair:

MP01717-3: 84960-4-PBS capture and 84960-3-PBS detection (validated in Sandwich ELISA)

Unconjugated rabbit recombinant monoclonal antibody in PBS only (BSA and azide free) storage buffer at a concentration of 1 mg/mL, ready for conjugation. Created using Proteintech's proprietary in-house recombinant technology. Recombinant production enables unrivalled batch-to-batch consistency, easy scale-up, and future security of supply.

This conjugation ready format makes antibodies ideal for use in many applications including: ELISAs, multiplex assays requiring matched pairs, mass cytometry, and multiplex imaging applications. Antibody use should be optimized by the end user for each application and assay.

## Background Information

Parathyroid hormone (PTH) is a crucial hormone secreted by the parathyroid glands. The main function of PTH is to regulate calcium and phosphorus metabolism in vertebrates. It increases blood calcium levels and decreases blood phosphorus levels. PTH also plays a role in maintaining bone health and is involved in the regulation of vitamin D metabolism.

## Storage

**Storage:**  
Store at -80°C.

**Storage Buffer:**  
PBS Only

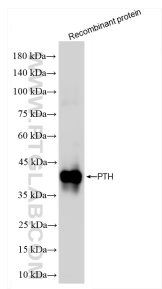
For technical support and original validation data for this product please contact:

T: 1 (888) 4PTGLAB (1-888-478-4522) (toll free in USA), or 1(312) 455-8498 (outside USA)

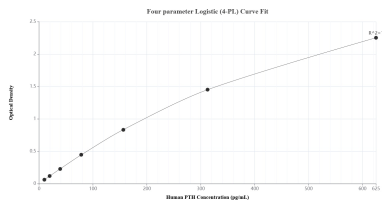
E: [proteintech@ptglab.com](mailto:proteintech@ptglab.com)  
W: [ptglab.com](http://ptglab.com)

This product is exclusively available under Proteintech Group brand and is not available to purchase from any other manufacturer.

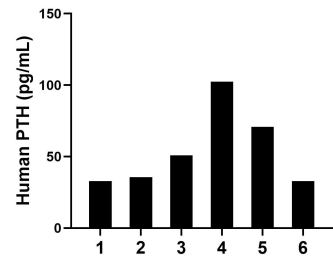
## Selected Validation Data



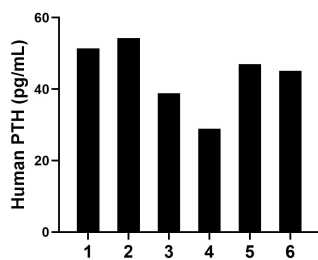
Recombinant protein were subjected to SDS PAGE followed by western blot with 84960-4-RR (PTH antibody) at dilution of 1:1000 incubated at room temperature for 1.5 hours. This data was developed using the same antibody clone with 84960-4-PBS in a different storage buffer formulation.



Sandwich ELISA standard curve of MP01717-3, Human PTH Recombinant Matched Antibody Pair - PBS only. 84960-4-PBS was coated to a plate as the capture antibody and incubated with serial dilutions of standard Eg3191. 84960-3-PBS was HRP conjugated as the detection antibody. Range: 9.77-625 pg/mL



Plasma of six individual healthy human donors was measured. The PTH concentration of detected samples was determined to be 54.2 ng/mL with a range of 32.7-102.4 pg/mL.



Serum of six individual healthy human donors was measured. The PTH concentration of detected samples was determined to be 44.3 pg/mL with a range of 28.9-54.3 pg/mL.