

For Research Use Only

Eg5 Recombinant antibody, PBS Only (Capture)

Catalog Number: 84966-2-PBS



Basic Information

Catalog Number: 84966-2-PBS	GenBank Accession Number: BC136474	Purification Method: Protein A purification
Size: 100ug , Concentration: 1 mg/ml by Nanodrop;	GeneID (NCBI): 3832	CloneNo.: 242611D10
Source: Rabbit	UNIPROT ID: P52732	
Isotype: IgG	Full Name: kinesin family member 11	
Immunogen Catalog Number: AG20001	Calculated MW: 1056 aa, 119 kDa	
	Observed MW: 120-130 kDa	

Applications

Tested Applications:
WB, IHC, IF/ICC, FC (Intra), Cytometric bead array, Indirect ELISA

Species Specificity:
human

Product Information

84966-2-PBS targets Eg5 as part of a matched antibody pair:

MP01688-2: 84966-2-PBS capture and 84966-1-PBS detection (validated in Cytometric bead array)

Unconjugated rabbit recombinant monoclonal antibody in PBS only (BSA and azide free) storage buffer at a concentration of 1 mg/mL, ready for conjugation. Created using Proteintech's proprietary in-house recombinant technology. Recombinant production enables unrivalled batch-to-batch consistency, easy scale-up, and future security of supply.

This conjugation ready format makes antibodies ideal for use in many applications including: ELISAs, multiplex assays requiring matched pairs, mass cytometry, and multiplex imaging applications. Antibody use should be optimized by the end user for each application and assay.

Background Information

Eg5 is a plus-end-directed microtubule motor encoded by KIF11 gene. It is an essential mitotic kinesin that plays a pivotal role in the formation and maintenance of bipolar spindle during early prometaphase. Eg5 has been implicated in tumorigenesis, and its overexpression has been found in various cancer tissues.

Storage

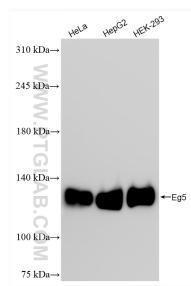
Storage:
Store at -80°C.

Storage Buffer:
PBS Only

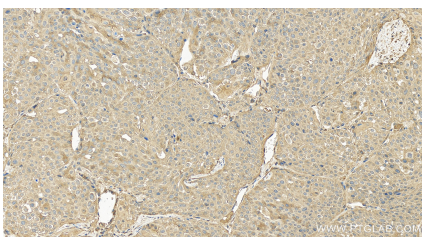
For technical support and original validation data for this product please contact:
T: 1 (888) 4PTGLAB (1-888-478-4522) (toll free in USA), or 1(312) 455-8498 (outside USA)
E: proteintech@ptglab.com
W: ptglab.com

This product is exclusively available under Proteintech Group brand and is not available to purchase from any other manufacturer.

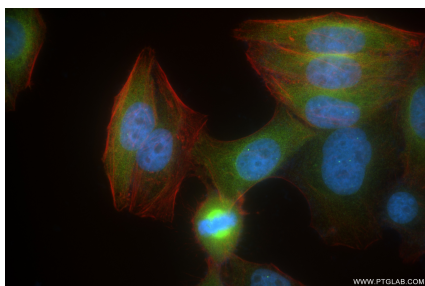
Selected Validation Data



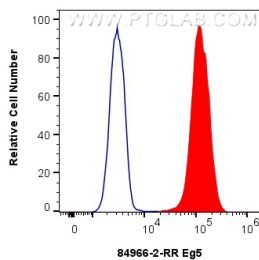
Various lysates were subjected to SDS PAGE followed by western blot with 84966-2-RR (Eg5 antibody) at dilution of 1:10000 incubated at room temperature for 1.5 hours. This data was developed using the same antibody clone with 84966-2-PBS in a different storage buffer formulation.



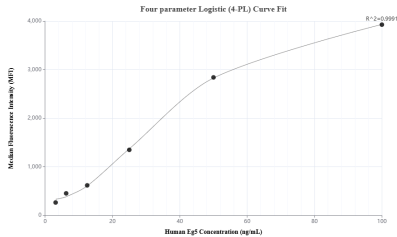
Immunohistochemical analysis of paraffin-embedded human lung cancer tissue slide using 84966-2-RR (Eg5 antibody) at dilution of 1:400 (under 40x lens). Heat mediated antigen retrieval with Tris-EDTA buffer (pH 9.0). This data was developed using the same antibody clone with 84966-2-PBS in a different storage buffer formulation.



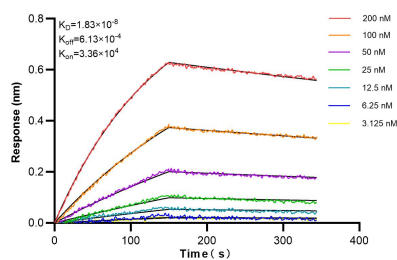
Immunofluorescent analysis of (4% PFA) fixed HepG2 cells using Eg5 antibody (84966-2-RR, Clone: 242611D10) at dilution of 1:500 and CoraLite®488-Conjugated Goat Anti-Rabbit IgG(H+L) (SA00013-2), CL594-Phalloidin (red). This data was developed using the same antibody clone with 84966-2-PBS in a different storage buffer formulation.



1x10⁶ HeLa cells were intracellularly stained with 0.25 ug Eg5 Recombinant antibody (84966-2-RR, Clone:242611D10) and CoraLite®488-Conjugated Goat Anti-Rabbit IgG(H+L) (SA00013-2)(red), or 0.25 ug Rabbit IgG Isotype Control Recombinant Antibody (98136-1-RR, Clone: 240953C9) (blue). Cells were fixed with 4% PFA and permeabilized with Flow Cytometry Perm Buffer (PF00011-C). This data was developed using the same antibody clone with 84966-2-



Cytometric bead array standard curve of MP01688-2, Eg5 Recombinant Matched Antibody Pair, PBS Only. Capture antibody: 84966-2-PBS. Detection antibody: 84966-1-PBS. Standard: Ag20001. Range: 3.125-100 ng/mL.



Bi-layer interferometry (BLI) kinetic assays of 84966-2-RR against Human Eg5 were performed. The affinity constant is 18.3 nM.