

For Research Use Only

Eg5 Recombinant antibody, PBS Only (Capture)

Catalog Number: 84966-3-PBS



Basic Information

Catalog Number: 84966-3-PBS	GenBank Accession Number: BC136474	Purification Method: Protein A purification
Size: 100ug , Concentration: 1 mg/ml by Nanodrop;	GeneID (NCBI): 3832	CloneNo.: 242611D11
Source: Rabbit	UNIPROT ID: P52732	
Isotype: IgG	Full Name: kinesin family member 11	
Immunogen Catalog Number: AG20001	Calculated MW: 1056 aa, 119 kDa	

Applications

Tested Applications:
Cytometric bead array, Sandwich ELISA, Indirect ELISA, Sample test

Species Specificity:
human

Product Information

84966-3-PBS targets Eg5 as part of a matched antibody pair:

MP01688-1: 84966-3-PBS capture and 84966-4-PBS detection (validated in Cytometric bead array, Sandwich ELISA)

Unconjugated rabbit recombinant monoclonal antibody in PBS only (BSA and azide free) storage buffer at a concentration of 1 mg/mL, ready for conjugation. Created using Proteintech's proprietary in-house recombinant technology. Recombinant production enables unrivalled batch-to-batch consistency, easy scale-up, and future security of supply.

This conjugation ready format makes antibodies ideal for use in many applications including: ELISAs, multiplex assays requiring matched pairs, mass cytometry, and multiplex imaging applications. Antibody use should be optimized by the end user for each application and assay.

Storage

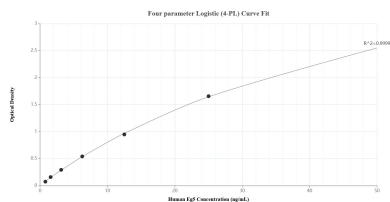
Storage:
Store at -80°C.

Storage Buffer:
PBS Only

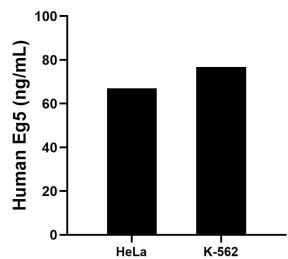
For technical support and original validation data for this product please contact:
T: 1 (888) 4PTGLAB (1-888-478-4522) (toll free in USA), or 1(312) 455-8498 (outside USA)
E: proteintech@ptglab.com
W: ptglab.com

This product is exclusively available under Proteintech Group brand and is not available to purchase from any other manufacturer.

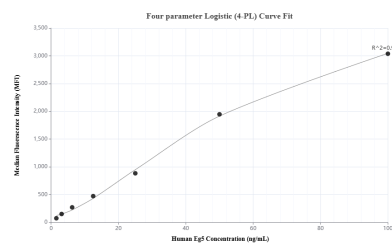
Selected Validation Data



Sandwich ELISA standard curve of MP01688-1, Human Eg5 Recombinant Matched Antibody Pair - PBS only. 84966-3-PBS was coated to a plate as the capture antibody and incubated with serial dilutions of standard Ag20001. 84966-4-PBS was HRP conjugated as the detection antibody. Range: 0.781-50 ng/mL.



The mean Eg5 concentration was determined to be 67.04 ng/mL in HeLa cell extract based on a 1.00 mg/mL extract load and 76.72 ng/mL in K-562 cell extract based on a 2.50 mg/mL extract load.



Cytometric bead array standard curve of MP01688-1, Eg5 Recombinant Matched Antibody Pair, PBS Only. Capture antibody: 84966-3-PBS. Detection antibody: 84966-4-PBS. Standard: Ag20001. Range: 1.563-100 ng/mL.