

For Research Use Only

RAD50 Recombinant antibody, PBS Only

Catalog Number: 84969-4-PBS



Basic Information

| | | |
|---|--|---|
| Catalog Number: 84969-4-PBS | GenBank Accession Number: NM_005732 | Purification Method: Protein A purification |
| Size: 100ug , Concentration: 1 mg/ml by Nanodrop; | GeneID (NCBI): 10111 | CloneNo.: 242541A5 |
| Source: Rabbit | UNIPROT ID: Q92878 | |
| Isotype: IgG | Full Name: RAD50 homolog (S. cerevisiae) | |
| Immunogen Catalog Number: AG29949 | Calculated MW: 154 kDa | |
| | Observed MW: 154 kDa | |

Applications

Tested Applications:
WB, IHC, Indirect ELISA

Species Specificity:
human, mouse, rat

Background Information

RAD50 belongs to the ABC-ATPase protein family that concurs in forming the Nucleotide Binding Domain (NBD). ATP binding to Rad50 induces a conformational change that dramatically increases the Rad50 NBD affinity for itself, allowing for its dimerization (PMID: 37569756). The Mre11-Rad50 (MR) complex has key functions in the detection, signaling and repair of DNA breaks (PMID: 35501303).

Storage

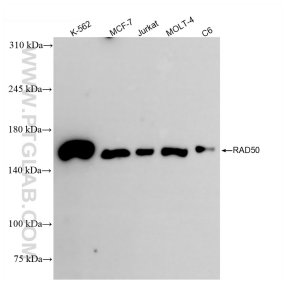
Storage:
Store at -80°C.

Storage Buffer:
PBS Only

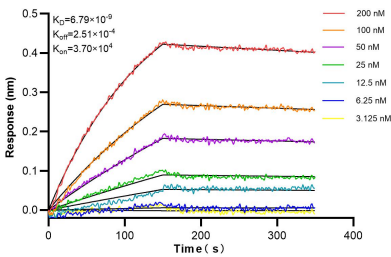
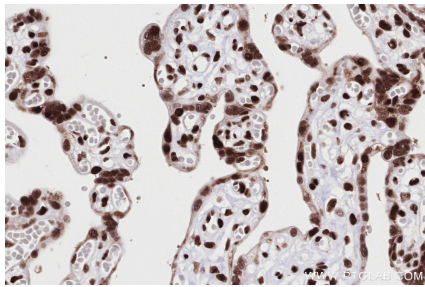
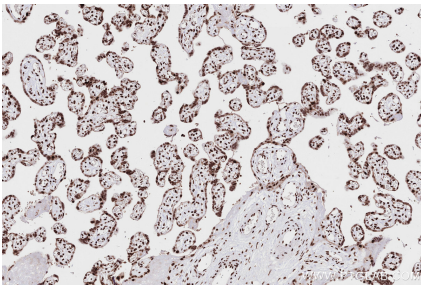
For technical support and original validation data for this product please contact:
T: 1 (888) 4PTGLAB (1-888-478-4522) (toll free in USA), or 1(312) 455-8498 (outside USA)
E: proteintech@ptglab.com
W: ptglab.com

This product is exclusively available under Proteintech Group brand and is not available to purchase from any other manufacturer.

Selected Validation Data



Various lysates were subjected to SDS PAGE followed by western blot with 84969-4-RR (RAD50 antibody) at dilution of 1:10000 incubated at room temperature for 1.5 hours. This data was developed using the same antibody clone with 84969-4-PBS in a different storage buffer formulation.



Biolayer interferometry (BLI) kinetic assays of 84969-4-RR against Human RAD50 were performed. The affinity constant is 6.79 nM.