

For Research Use Only

GS28 Recombinant antibody, PBS Only (Capture)

Catalog Number: 84971-3-PBS



Basic Information

Catalog Number: 84971-3-PBS	GenBank Accession Number: BC012620	Purification Method: Protein A purification
Size: 100ug , Concentration: 1 mg/ml by Nanodrop;	GeneID (NCBI): 9527	CloneNo.: 242552G12
Source: Rabbit	UNIPROT ID: O95249	
Isotype: IgG	Full Name: golgi SNAP receptor complex member 1	
Immunogen Catalog Number: AG9021	Calculated MW: 28.6 kDa	
	Observed MW: 28 kDa	

Applications

Tested Applications:
WB, IHC, IF/ICC, Cytometric bead array, Indirect ELISA

Species Specificity:
human, mouse, rat

Product Information

84971-3-PBS targets GS28 as part of a matched antibody pair:

MP01719-2: 84971-3-PBS capture and 84971-4-PBS detection (validated in Cytometric bead array)

Unconjugated rabbit recombinant monoclonal antibody in PBS only (BSA and azide free) storage buffer at a concentration of 1 mg/mL, ready for conjugation. Created using Proteintech's proprietary in-house recombinant technology. Recombinant production enables unrivalled batch-to-batch consistency, easy scale-up, and future security of supply.

This conjugation ready format makes antibodies ideal for use in many applications including: ELISAs, multiplex assays requiring matched pairs, mass cytometry, and multiplex imaging applications. Antibody use should be optimized by the end user for each application and assay.

Background Information

GS28, also known as GOSR1, is a 28-kDa Golgi SNARE protein that participates in ER-Golgi and intra-Golgi transport. GS28 is considered to be a core component of the Golgi SNARE complex. (PMID: 8638159)

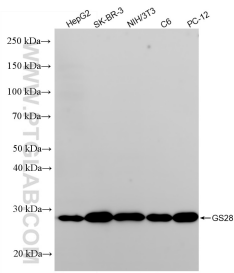
Storage

Storage:
Store at -80°C.
Storage Buffer:
PBS only, pH7.3

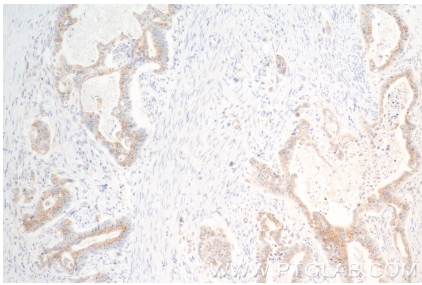
For technical support and original validation data for this product please contact:
T: 1 (888) 4PTGLAB (1-888-478-4522) (toll free in USA), or 1(312) 455-8498 (outside USA)
E: proteintech@ptglab.com
W: ptglab.com

This product is exclusively available under Proteintech Group brand and is not available to purchase from any other manufacturer.

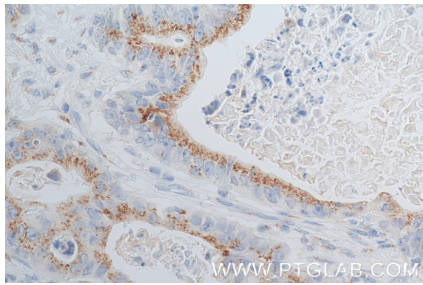
Selected Validation Data



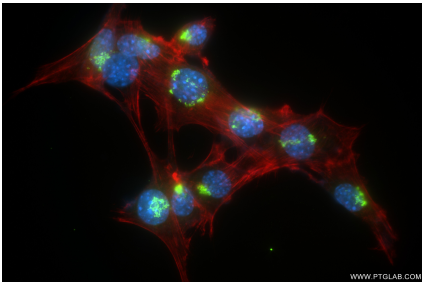
Various lysates were subjected to SDS PAGE followed by western blot with 84971-3-RR (GS28 antibody) at dilution of 1:10000 incubated at room temperature for 1.5 hours. This data was developed using the same antibody clone with 84971-3-PBS in a different storage buffer formulation.



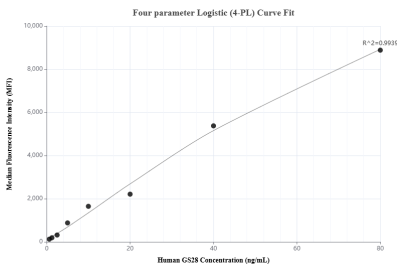
Immunohistochemical analysis of paraffin-embedded human stomach cancer tissue slide using 84971-3-RR (GS28 antibody) at dilution of 1:1000 (under 10x lens). Heat mediated antigen retrieval with Tris-EDTA buffer (pH 9.0). This data was developed using the same antibody clone with 84971-3-PBS in a different storage buffer formulation.



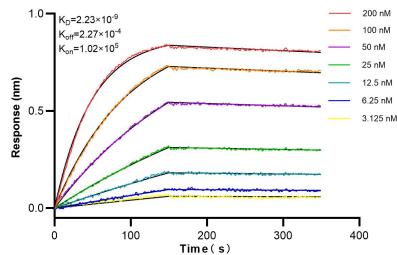
Immunohistochemical analysis of paraffin-embedded human stomach cancer tissue slide using 84971-3-RR (GS28 antibody) at dilution of 1:1000 (under 40x lens). Heat mediated antigen retrieval with Tris-EDTA buffer (pH 9.0). This data was developed using the same antibody clone with 84971-3-PBS in a different storage buffer formulation.



Immunofluorescent analysis of (4% PFA) fixed NIH/3T3 cells using GS28 antibody (84971-3-RR, Clone: 242552G12) at dilution of 1:1000 and CoraLite@488-Conjugated Goat Anti-Rabbit IgG(H+L) (SA00013-2), CL594-Phalloidin (red). This data was developed using the same antibody clone with 84971-3-PBS in a different storage buffer formulation.



Cytometric bead array standard curve of MP01719-2, GS28 Recombinant Matched Antibody Pair, PBS Only. Capture antibody: 84971-3-PBS. Detection antibody: 84971-4-PBS. Standard: Ag9021. Range: 0.625-80 ng/mL.



Bi-layer interferometry (BLI) kinetic assays of 84971-3-RR against Human GS28 were performed. The affinity constant is 2.23 nM.