

For Research Use Only

GS28 Recombinant antibody

Catalog Number: 84971-3-RR



Basic Information

Catalog Number:	84971-3-RR	GenBank Accession Number:	BC012620	Purification Method:	Protein A purification
Size:	100ul , Concentration: 1000 µg/ml by Nanodrop;	GeneID (NCBI):	9527	CloneNo.:	242552G12
Source:	Rabbit	UNIPROT ID:	O95249	Recommended Dilutions:	WB 1:5000-1:50000 IHC 1:500-1:2000 IF/ICC 1:500-1:2000
Isotype:	IgG	Full Name:	golgi SNAP receptor complex member 1		
Immunogen Catalog Number:	AG9021	Calculated MW:	28.6 kDa		
		Observed MW:	28 kDa		

Applications

Tested Applications:
WB, IHC, IF/ICC, ELISA

Species Specificity:
human, mouse, rat

Note-IHC: suggested antigen retrieval with TE buffer pH 9.0; (*) Alternatively, antigen retrieval may be performed with citrate buffer pH 6.0

Positive Controls:

WB : HepG2 cells, SK-BR-3 cells, NIH/3T3 cells, C6 cells, PC-12 cells

IHC : human stomach cancer tissue,

IF/ICC : NIH/3T3 cells,

Background Information

GS28, also known as GOSR1, is a 28-kDa Golgi SNARE protein that participates in ER-Golgi and intra-Golgi transport. GS28 is considered to be a core component of the Golgi SNARE complex. (PMID: 8638159)

Storage

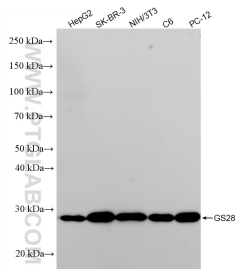
Storage:
Store at -20°C. Stable for one year after shipment.
Storage Buffer:
PBS with 0.02% sodium azide and 50% glycerol pH 7.3.
Aliquoting is unnecessary for -20°C storage

*** 20ul sizes contain 0.1% BSA

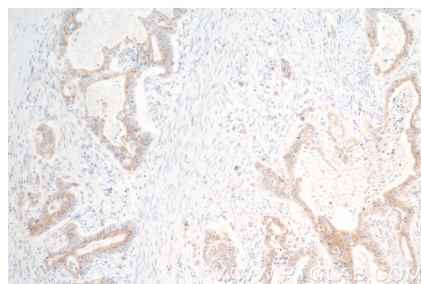
For technical support and original validation data for this product please contact:
T: 1 (888) 4PTGLAB (1-888-478-4522) (toll free in USA), or 1(312) 455-8498 (outside USA)
E: proteintech@ptglab.com
W: ptglab.com

This product is exclusively available under Proteintech Group brand and is not available to purchase from any other manufacturer.

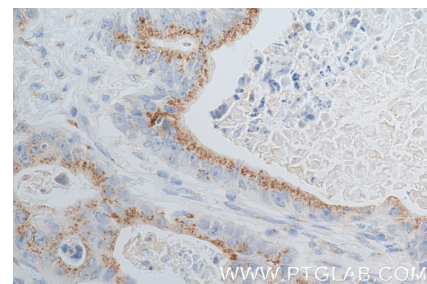
Selected Validation Data



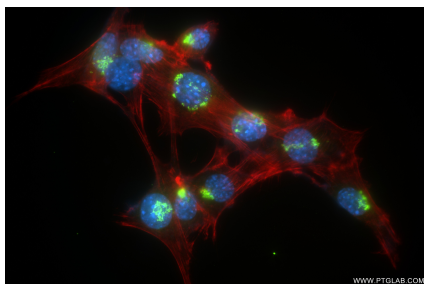
Various lysates were subjected to SDS PAGE followed by western blot with 84971-3-RR (GS28 antibody) at dilution of 1:10000 incubated at room temperature for 1.5 hours.



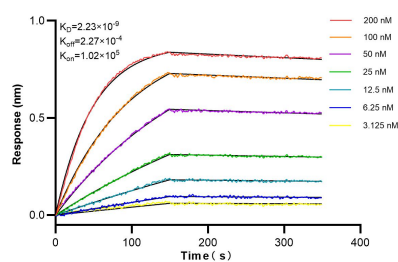
Immunohistochemical analysis of paraffin-embedded human stomach cancer tissue slide using 84971-3-RR (GS28 antibody) at dilution of 1:1000 (under 10x lens). Heat mediated antigen retrieval with Tris-EDTA buffer (pH 9.0).



Immunohistochemical analysis of paraffin-embedded human stomach cancer tissue slide using 84971-3-RR (GS28 antibody) at dilution of 1:1000 (under 40x lens). Heat mediated antigen retrieval with Tris-EDTA buffer (pH 9.0).



Immunofluorescent analysis of (4% PFA) fixed NIH/3T3 cells using GS28 antibody (84971-3-RR, Clone: 242552G12) at dilution of 1:1000 and CoraLite®488-Conjugated Goat Anti-Rabbit IgG(H+L) (SA00013-2), CL594-Phalloidin (red).



Biolayer interferometry (BLI) kinetic assays of 84971-3-RR against Human GS28 were performed. The affinity constant is 2.23 nM.