

For Research Use Only

# Phospho-POLR2A (Ser2) Recombinant antibody, PBS Only

Catalog Number: 84974-1-PBS



## Basic Information

<b>Catalog Number:</b> 84974-1-PBS	<b>GenBank Accession Number:</b> BC137231	<b>Purification Method:</b> Protein A purification
<b>Size:</b> 100ug, Concentration: 1 mg/ml by Nanodrop;	<b>GeneID (NCBI):</b> 5430	<b>CloneNo.:</b> 241829B4
<b>Source:</b> Rabbit	<b>UNIPROT ID:</b> P24928	
<b>Isotype:</b> IgG	<b>Full Name:</b> polymerase (RNA) II (DNA directed) polypeptide A, 220kDa	
	<b>Calculated MW:</b> 1970 aa, 217 kDa	
	<b>Observed MW:</b> 250 kDa	

## Applications

**Tested Applications:**  
WB, FC (Intra), Indirect ELISA

**Species Specificity:**  
human

## Background Information

DNA-directed RNA polymerase II subunit RPB1 is the catalytic core component of DNA-dependent RNA polymerase II (Pol II). So that the information encoded in DNA can be used, RNA polymerase II makes copies of specific genes. To ensure that RNA polymerase II copies the correct genes at the correct time, a group of regulatory proteins are needed to control its activity. Many of these proteins interact with RNA polymerase II at a region known as the C-terminal domain, or CTD for short. For example, before RNA polymerase can make a full copy of a gene, a small molecule called a phosphate group must first be added to CTD at specific units known as Ser2. (PMID: 31385803)

## Storage

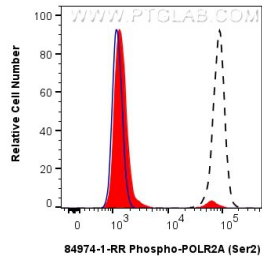
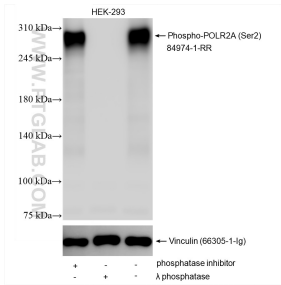
**Storage:**  
Store at -80°C.

**Storage Buffer:**  
PBS Only

For technical support and original validation data for this product please contact:  
T: 1 (888) 4PTGLAB (1-888-478-4522) (toll free in USA), or 1(312) 455-8498 (outside USA)  
E: [proteintech@ptglab.com](mailto:proteintech@ptglab.com)  
W: [ptglab.com](http://ptglab.com)

This product is exclusively available under Proteintech Group brand and is not available to purchase from any other manufacturer.

Selected Validation Data



Non-treated HEK-293 cells, phosphatase inhibitor treated HEK-293 cells and  $\lambda$  phosphatase treated HEK-293 cells were subjected to SDS PAGE followed by western blot with 84974-1-RR (Phospho-POLR2A (Ser2) antibody) at dilution of 1:10000 incubated at room temperature for 1.5 hours. The membrane was stripped and re-blotted with Vinculin (66305-1-Ig) antibody as a loading control. This data was developed using the same antibody clone with 84974-1-

$1 \times 10^6$   $\lambda$  phosphatase treated HEK-293 cells were intracellularly stained with 0.06  $\mu$ g Phospho-POLR2A (Ser2) Recombinant antibody (84974-1-RR, Clone:241829B4) and CoraLite<sup>®</sup>488-Conjugated Goat Anti-Rabbit IgG(H+L) (SA00013-2)(red), or 0.06  $\mu$ g Rabbit IgG Isotype Control RecAb (98136-1-RR, Clone: 240953C9) (blue). Cells were fixed with 4% PFA and permeabilized with 90% MeOH. This data was developed using the same antibody clone with 84974-1-PBS in a