

For Research Use Only

# C3orf20 Recombinant antibody, PBS Only

Catalog Number: 84975-1-PBS



## Basic Information

<b>Catalog Number:</b> 84975-1-PBS	<b>GenBank Accession Number:</b> BC038406	<b>Purification Method:</b> Protein A purification
<b>Size:</b> 100ug, Concentration: 1 mg/ml by Nanodrop;	<b>GeneID (NCBI):</b> 84077	<b>CloneNo.:</b> 242404E2
<b>Source:</b> Rabbit	<b>UNIPROT ID:</b> Q8ND61	
<b>Isotype:</b> IgG	<b>Full Name:</b> chromosome 3 open reading frame 20	
<b>Immunogen Catalog Number:</b> AG15031	<b>Calculated MW:</b> 904 aa, 101 kDa	
	<b>Observed MW:</b> 88 kDa	

## Applications

**Tested Applications:**  
WB, Indirect ELISA

**Species Specificity:**  
human, mouse, rat

## Background Information

The function of C3orf20 has not been widely studied, and is yet to be fully elucidated. Two isoforms were produced by alternative splicing with predicted MW of 88 and 101 kDa according to UniProt. Catalog#20906-1-AP can recognize both 88 and 101 kDa isoforms.

## Storage

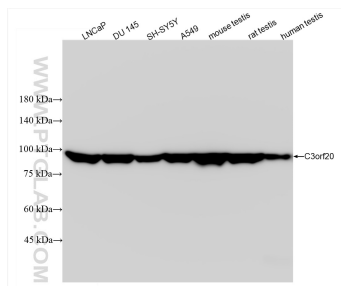
**Storage:**  
Store at -80°C.

**Storage Buffer:**  
PBS Only

For technical support and original validation data for this product please contact:  
T: 1 (888) 4PTGLAB (1-888-478-4522) (toll free in USA), or 1(312) 455-8498 (outside USA)  
E: [proteintech@ptglab.com](mailto:proteintech@ptglab.com)  
W: [ptglab.com](http://ptglab.com)

This product is exclusively available under Proteintech Group brand and is not available to purchase from any other manufacturer.

## Selected Validation Data



Various lysates were subjected to SDS PAGE followed by western blot with 84975-1-RR (C3orf20 antibody) at dilution of 1:10000 incubated at room temperature for 1.5 hours. This data was developed using the same antibody clone with 84975-1-PBS in a different storage buffer formulation.