

For Research Use Only

Cytokeratin 17-specific Recombinant antibody, PBS Only

Catalog Number: 84978-1-PBS



Basic Information

Catalog Number: 84978-1-PBS	GenBank Accession Number: NM_000422	Purification Method: Protein A purification
Size: 100ug, Concentration: 1 mg/ml by Nanodrop;	GeneID (NCBI): 3872	CloneNo.: 242240A8
Source: Rabbit	UNIPROT ID: Q04695	
Isotype: IgG	Full Name: keratin 17	
	Calculated MW: 48 kDa	
	Observed MW: 48 kDa	

Applications

Tested Applications:
WB, IHC, IF/ICC, FC (Intra), Indirect ELISA

Species Specificity:
human, mouse, rat

Background Information

Keratins are a large family of proteins that form the intermediate filaments that make up the cytoskeleton. Type I keratins are a group of acidic intermediate filament proteins and type II keratins are the basic or neutral counterparts. Keratin 17 is encoded by the KRT17 gene and is a type I cytokeratin found in nail beds, hair follicles, sebaceous glands, and epidermal appendages. The molecular weight of cytokeratin 17 is approximately 49 kDa. Cytokeratin 17 plays a role in the formation and maintenance of epidermal appendages, especially in determining the shape and orientation of hair. It is required for the maintenance of the anagen (growth) state of hair follicles by modulating the function of TNF-alpha for hair cycling and is also involved in tissue repair (PMID: 16702408).

Storage

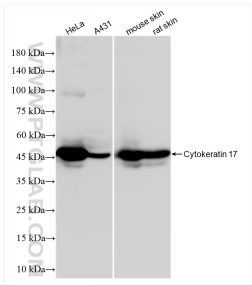
Storage:
Store at -80°C.

Storage Buffer:
PBS only

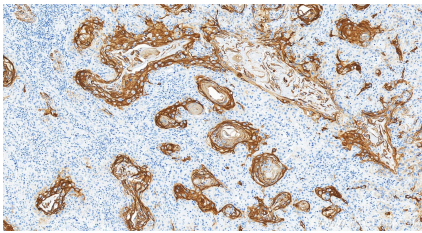
For technical support and original validation data for this product please contact:
T: 1 (888) 4PTGLAB (1-888-478-4522) (toll free in USA), or 1(312) 455-8498 (outside USA)
E: proteintech@ptglab.com
W: ptglab.com

This product is exclusively available under Proteintech Group brand and is not available to purchase from any other manufacturer.

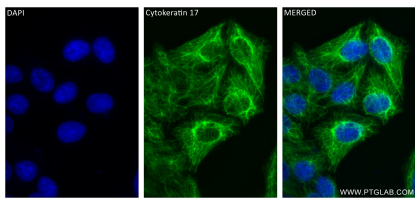
Selected Validation Data



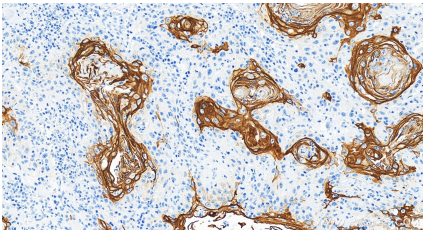
Various lysates were subjected to SDS PAGE followed by western blot with 84978-1-RR (KRT17-Specific antibody) at dilution of 1:10000 incubated at room temperature for 1.5 hours. This data was developed using the same antibody clone with 84978-1-PBS in a different storage buffer formulation.



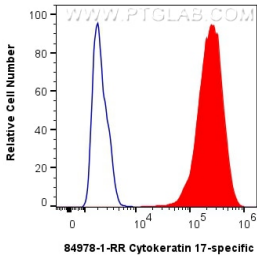
Immunohistochemical analysis of paraffin-embedded human skin cancer tissue slide using 84978-1-RR (Cytokeratin 17-specific antibody) at dilution of 1:6000 (under 20x lens). Heat mediated antigen retrieval with Tris-EDTA buffer (pH 9.0). This data was developed using the same antibody clone with 84978-1-PBS in a different storage buffer formulation.



Immunofluorescent analysis of (-20°C Methanol) fixed HeLa cells using Cytokeratin 17-Specific antibody (84978-1-RR, Clone: 242240A8) at dilution of 1:500 and CoraLite®488-Conjugated Goat Anti-Rabbit IgG(H+L) (SA00013-2), CL594-Phalloidin (red). This data was developed using the same antibody clone with 84978-1-PBS in a different storage buffer formulation.



Immunohistochemical analysis of paraffin-embedded human skin cancer tissue slide using 84978-1-RR (Cytokeratin 17-specific antibody) at dilution of 1:6000 (under 20x lens). Heat mediated antigen retrieval with Tris-EDTA buffer (pH 9.0). This data was developed using the same antibody clone with 84978-1-PBS in a different storage buffer formulation.



1x10⁶ HeLa cells were intracellularly stained with 0.25 ug Cytokeratin 17-specific Recombinant antibody (84978-1-RR, Clone:242240A8) and CoraLite®488-Conjugated Goat Anti-Rabbit IgG(H+L) (SA00013-2)(red), or 0.25 ug Rabbit IgG Isotype Control RecAb (98136-1-RR, Clone: 240953C9) (blue). Cells were fixed with 4% PFA and permeabilized with Flow Cytometry Perm Buffer (PF00011-C). This data was developed using the same antibody clone

