

For Research Use Only

PCM1 Recombinant antibody, PBS Only

Catalog Number: 84979-1-PBS



Basic Information

Catalog Number: 84979-1-PBS	GenBank Accession Number: BC000453	Purification Method: Protein A purification
Size: 100ug, Concentration: 1 mg/ml by Nanodrop;	GeneID (NCBI): 5108	CloneNo.: 242199A9
Source: Rabbit	UNIPROT ID: Q15154	
Isotype: IgG	Full Name: pericentriolar material 1	
Immunogen Catalog Number: AG13977	Calculated MW: 2024 aa, 228 kDa	
	Observed MW: 245-320 kDa	

Applications

Tested Applications:
WB, IHC, IF/ICC, FC (Intra), Indirect ELISA

Species Specificity:
human, mouse

Background Information

Pericentriolar material 1 (PCM1) is a component of centriolar satellites, which are electron dense granules scattered around centrosomes (PMID: 10579718). PCM1 is required for centrosome assembly and function. It acts as a scaffold to target several proteins to the centrosome in a dynein motor-dependent manner and regulate microtubular dynamics (PMID:18762586; 12403812). It is also involved in the biogenesis of cilia (PMID: 18772192). Chromosomal aberrations involving PCM1 gene are associated with papillary thyroid carcinomas and a variety of hematological malignancies, including atypical chronic myeloid leukemia and T-cell lymphoma. (PMID: 10980597; 16091753; 15805263; 16424865).

Storage

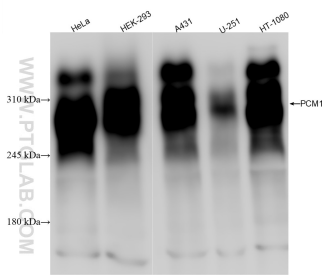
Storage:
Store at -80°C.

Storage Buffer:
PBS Only

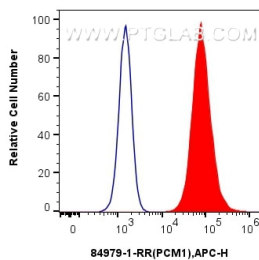
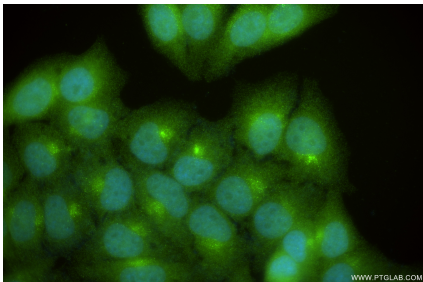
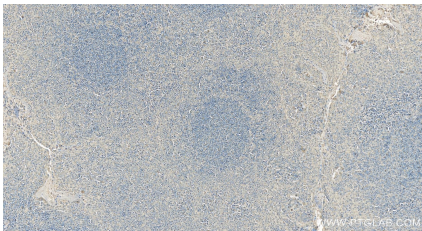
For technical support and original validation data for this product please contact:
T: 1 (888) 4PTGLAB (1-888-478-4522) (toll free in USA), or 1(312) 455-8498 (outside USA)
E: proteintech@ptglab.com
W: ptglab.com

This product is exclusively available under Proteintech Group brand and is not available to purchase from any other manufacturer.

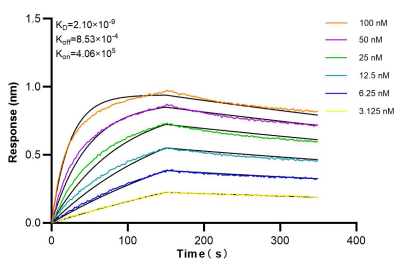
Selected Validation Data



Various lysates were subjected to SDS PAGE followed by western blot with 84979-1-RR (PCM1 antibody) at dilution of 1:3000 incubated at room temperature for 1.5 hours. This data was developed using the same antibody clone with 84979-1-PBS in a different storage buffer formulation.



1x10⁶ K562 were intracellularly stained with 0.25 ug PCM1 Recombinant antibody (84979-1-RR, Clone:242199A9) and APC-Conjugated Goat Anti-Rabbit IgG(H+L)(red), or 0.25 ug Rabbit IgG Isotype Control Recombinant Antibody (98136-1-RR, Clone: 240953C9) (blue). Cells were fixed with 4% PFA and permeabilized with Flow Cytometry Perm Buffer (PF00011-C). This data was developed using the same antibody clone with 84979-1-PBS in a different storage buffer



Biolayer interferometry (BLI) kinetic assays of 84979-1-RR against Human PCM1 were performed. The affinity constant is 21.0 nM.