

For Research Use Only

# PCM1 Recombinant antibody

Catalog Number: 84979-2-RR



## Basic Information

<b>Catalog Number:</b> 84979-2-RR	<b>GenBank Accession Number:</b> BC000453	<b>Purification Method:</b> Protein A purification
<b>Size:</b> 100ul , Concentration: 1000 ug/ml by Nanodrop;	<b>GeneID (NCBI):</b> 5108	<b>CloneNo.:</b> 242199D6
<b>Source:</b> Rabbit	<b>UNIPROT ID:</b> Q15154	<b>Recommended Dilutions:</b> IHC 1:50-1:500 IF/ICC 1:250-1:1000
<b>Isotype:</b> IgG	<b>Full Name:</b> pericentriolar material 1	
<b>Immunogen Catalog Number:</b> AG13977	<b>Calculated MW:</b> 2024 aa, 228 kDa	

## Applications

<b>Tested Applications:</b> IHC, IF/ICC, FC (Intra), ELISA	<b>Positive Controls:</b>
<b>Species Specificity:</b> human, mouse	IHC : mouse heart tissue, IF/ICC : HepG2 cells, HeLa cells
<b>Note-IHC: suggested antigen retrieval with TE buffer pH 9.0; (*) Alternatively, antigen retrieval may be performed with citrate buffer pH 6.0</b>	

## Background Information

Pericentriolar material 1 (PCM1) is a component of centriolar satellites, which are electron dense granules scattered around centrosomes (PMID: 10579718). PCM1 is required for centrosome assembly and function. It acts as a scaffold to target several proteins to the centrosome in a dynein motor-dependent manner and regulate microtubular dynamics (PMID:18762586; 12403812). It is also involved in the biogenesis of cilia (PMID: 18772192). Chromosomal aberrations involving PCM1 gene are associated with papillary thyroid carcinomas and a variety of hematological malignancies, including atypical chronic myeloid leukemia and T-cell lymphoma. (PMID: 10980597; 16091753; 15805263; 16424865).

## Storage

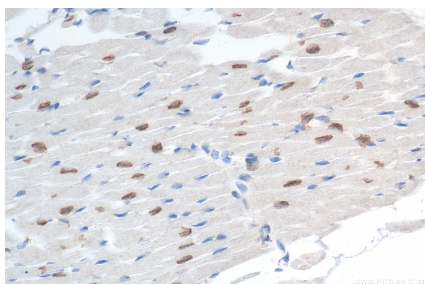
**Storage:**  
Store at -20°C. Stable for one year after shipment.  
**Storage Buffer:**  
PBS with 0.02% sodium azide and 50% glycerol pH 7.3.  
Aliquoting is unnecessary for -20°C storage

\*\*\* 20ul sizes contain 0.1% BSA

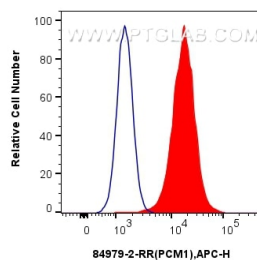
For technical support and original validation data for this product please contact:  
T: 1 (888) 4PTGLAB (1-888-478-4522) (toll free in USA), or 1(312) 455-8498 (outside USA)  
E: proteintech@ptglab.com  
W: ptglab.com

This product is exclusively available under Proteintech Group brand and is not available to purchase from any other manufacturer.

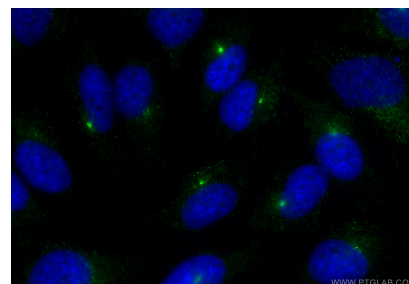
## Selected Validation Data



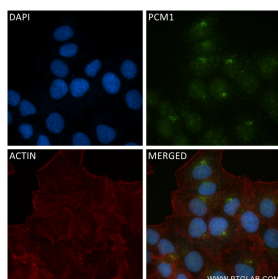
Immunohistochemical analysis of paraffin-embedded mouse heart tissue slide using 84979-2-RR (PCM1 antibody) at dilution of 1:200 (under 40x lens). Heat mediated antigen retrieval with Tris-EDTA buffer (pH 9.0).



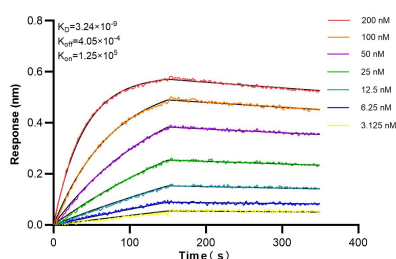
$1 \times 10^6$  K562 were intracellularly stained with 0.25 ug PCM1 Recombinant antibody (84979-2-RR, Clone:242199D6) and APC-Conjugated Goat Anti-Rabbit IgG(H+L)(red), or 0.25 ug Rabbit IgG Isotype Control Recombinant Antibody (98136-1-RR, Clone: 240953C9) (blue). Cells were fixed with 4% PFA and permeabilized with Flow Cytometry Perm Buffer (PF00011-C).



Immunofluorescent analysis of (-20°C Methanol) fixed HeLa cells using PCM1 antibody (84979-2-RR, Clone: 242199D6) at dilution of 1:400 and CoraLite®488-Conjugated Goat Anti-Rabbit IgG(H+L) (SA00013-2).



Immunofluorescent analysis of (4% PFA) fixed HepG2 cells using PCM1 antibody (84979-2-RR, Clone: 242199D6) at dilution of 1:500 and CoraLite®488-Conjugated Goat Anti-Rabbit IgG(H+L) (SA00013-2), CL594-Phalloidin (red).



Biolayer interferometry (BLI) kinetic assays of 84979-2-RR against Human PCM1 were performed. The affinity constant is 3.24 nM.