

For Research Use Only

Cyclin T1 Recombinant antibody

Catalog Number: 84980-1-RR



Basic Information

Catalog Number:

84980-1-RR

Size:

100ul , Concentration: 1000 ug/ml by Nanodrop;

Source:

Rabbit

Isotype:

IgG

GenBank Accession Number:

NM_001240

GeneID (NCBI):

904

UNIPROT ID:

O60563

Full Name:

cyclin T1

Calculated MW:

81 kDa

Observed MW:

75-81 kDa

Purification Method:

Protein A purification

CloneNo.:

242256C3

Recommended Dilutions:

WB 1:5000-1:50000

Applications

Tested Applications:

WB, FC (Intra), ELISA

Species Specificity:

human

Positive Controls:

WB : K-562 cells, HeLa cells, Jurkat cells, HepG2 cells, MCF-7 cells

Background Information

CCNT1, also named as Cyclin T1 and CycT1, belongs to the cyclin family and Cyclin C subfamily. It is a regulatory subunit of the cyclin-dependent kinase pair (CDK9/cyclin-T1) complex which also called positive transcription elongation factor B (P-TEFb). In case of HIV or SIV infections, CCNT1 binds to the transactivation domain of the viral nuclear transcriptional activator, Tat, thereby increasing Tat's affinity for the transactivating response RNA element (TAR RNA). CCNT1 serves as an essential cofactor for Tat, by promoting RNA Pol II activation, allowing transcription of viral genes. The antibody is specific to CCNT1.

Storage

Storage:

Store at -20°C. Stable for one year after shipment.

Storage Buffer:

PBS with 0.02% sodium azide and 50% glycerol pH 7.3.

Aliquoting is unnecessary for -20°C storage

*** 20ul sizes contain 0.1% BSA

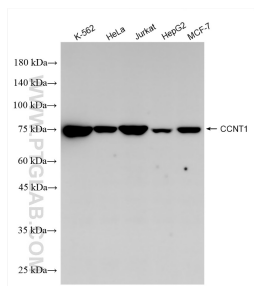
For technical support and original validation data for this product please contact:

T: 1 (888) 4PTGLAB (1-888-478-4522) (toll free in USA), or 1(312) 455-8498 (outside USA)

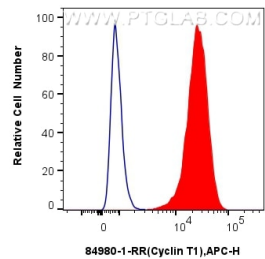
E: proteintech@ptglab.com
W: ptglab.com

This product is exclusively available under Proteintech Group brand and is not available to purchase from any other manufacturer.

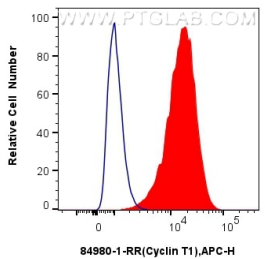
Selected Validation Data



Various lysates were subjected to SDS PAGE followed by western blot with 84980-1-RR (Cyclin T1 antibody) at dilution of 1:10000 incubated at room temperature for 1.5 hours.



1x10⁶ MCF-7 cells were intracellularly stained with 0.25 ug Cyclin T1 Recombinant antibody (84980-1-RR, Clone:242256C3) (red), or 0.25 ug Rabbit IgG Isotype Control Recombinant Antibody (98136-1-RR, Clone: 240953C9) (blue) and APC-Conjugated Goat Anti-Rabbit IgG(H+L). Cells were fixed and permeabilized with Transcription Factor Staining Buffer Kit (PF00011).



1x10⁶ U2OS cells were intracellularly stained with 0.25 ug Cyclin T1 Recombinant antibody (84980-1-RR, Clone:242256C3) (red), or 0.25 ug Rabbit IgG Isotype Control Recombinant Antibody (98136-1-RR, Clone: 240953C9) (blue) and APC-Conjugated Goat Anti-Rabbit IgG(H+L). Cells were fixed and permeabilized with Transcription Factor Staining Buffer Kit (PF00011).