

For Research Use Only

# GATA6 Recombinant antibody, PBS Only

Catalog Number: 84987-5-PBS



## Basic Information

Catalog Number:

84987-5-PBS

Size:

100ug , Concentration: 1 mg/ml by Nanodrop;

Source:

Rabbit

Isotype:

IgG

GenBank Accession Number:

NM\_005257

GeneID (NCBI):

2627

UNIPROT ID:

Q92908

Full Name:

GATA binding protein 6

Calculated MW:

60 kDa

Observed MW:

60-64 kDa

Purification Method:

Protein A purification

CloneNo.:

242325G7

## Applications

Tested Applications:

WB, IF/ICC, Indirect ELISA

Species Specificity:

human

## Background Information

GATA6 is a member of the GATA family of zinc-finger transcriptional regulators, which play crucial roles in the regulation of cell growth, differentiation, survival, and maintenance of body functions. Named after the conserved base sequence (G/A)GATA(A/T), GATA6 features conserved tandem zinc fingers and is essential in coordinating the development and precise gene regulation of diverse tissues, including the heart and gastrointestinal tract. GATA6 recognizes the sequence (A/T/C)GATA(A/T)A and interacts with other transcriptional regulators through its zinc-finger domain.

## Storage

Storage:

Store at -80°C.

Storage Buffer:

PBS only, pH7.3

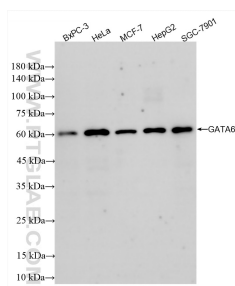
For technical support and original validation data for this product please contact:

T: 1 (888) 4PTGLAB (1-888-478-4522) (toll free in USA), or 1(312) 455-8498 (outside USA)

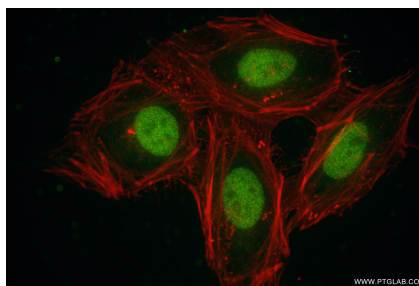
E: [proteintech@ptglab.com](mailto:proteintech@ptglab.com)  
W: [ptglab.com](http://ptglab.com)

This product is exclusively available under Proteintech Group brand and is not available to purchase from any other manufacturer.

## Selected Validation Data



Various lysates were subjected to SDS PAGE followed by western blot with 84987-5-RR (GATA6 antibody) at dilution of 1:3000 incubated at room temperature for 1.5 hours. This data was developed using the same antibody clone with 84987-5-PBS in a different storage buffer formulation.



Immunofluorescent analysis of (4% PFA) fixed HeLa cells using GATA6 antibody (84987-5-RR, Clone: 242325G7) at dilution of 1:1000 and CoraLite® 488-Conjugated Goat Anti-Rabbit IgG(H+L) (SA00013-2), CL594-Phalloidin (red). This data was developed using the same antibody clone with 84987-5-PBS in a different storage buffer formulation.