

For Research Use Only

GATA6 Recombinant antibody

Catalog Number: 84987-5-RR



Basic Information

Catalog Number:

84987-5-RR

Size:

100ul, Concentration: 1000 µg/ml by Nanodrop;

Source:

Rabbit

Isotype:

IgG

GenBank Accession Number:

NM_005257

GeneID (NCBI):

2627

UNIPROT ID:

Q92908

Full Name:

GATA binding protein 6

Calculated MW:

60 kDa

Observed MW:

60-64 kDa

Purification Method:

Protein A purification

CloneNo.:

242325G7

Recommended Dilutions:

WB 1:1000-1:6000

IF/ICC 1:500-1:2000

Applications

Tested Applications:

WB, IF/ICC, ELISA

Species Specificity:

human

Positive Controls:

WB : BxPC-3 cells, HeLa cells, MCF-7 cells, HepG2 cells, SGC-7901 cells

IF/ICC : HeLa cells,

Background Information

GATA6 is a member of the GATA family of zinc-finger transcriptional regulators, which play crucial roles in the regulation of cell growth, differentiation, survival, and maintenance of body functions. Named after the conserved base sequence (G/A)GATA(A/T), GATA6 features conserved tandem zinc fingers and is essential in coordinating the development and precise gene regulation of diverse tissues, including the heart and gastrointestinal tract. GATA6 recognizes the sequence (A/T/C)GATA(A/T)A and interacts with other transcriptional regulators through its zinc-finger domain.

Storage

Storage:

Store at -20°C. Stable for one year after shipment.

Storage Buffer:

PBS with 0.02% sodium azide and 50% glycerol, pH7.3

Aliquoting is unnecessary for -20°C storage

*** 20ul sizes contain 0.1% BSA

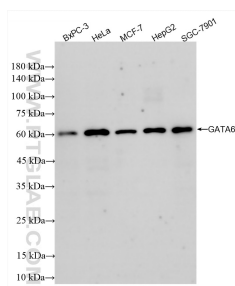
For technical support and original validation data for this product please contact:

T: 1 (888) 4PTGLAB (1-888-478-4522) (toll free in USA), or 1(312) 455-8498 (outside USA)

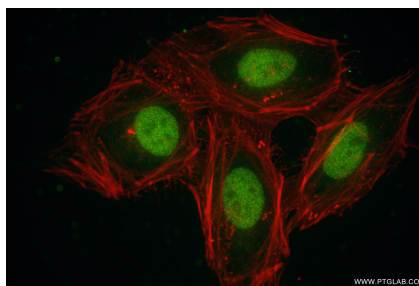
E: proteintech@ptglab.com
W: ptglab.com

This product is exclusively available under Proteintech Group brand and is not available to purchase from any other manufacturer.

Selected Validation Data



Various lysates were subjected to SDS PAGE followed by western blot with 84987-5-RR (GATA6 antibody) at dilution of 1:3000 incubated at room temperature for 1.5 hours.



Immunofluorescent analysis of (4% PFA) fixed HeLa cells using GATA6 antibody (84987-5-RR, Clone: 242325G7) at dilution of 1:1000 and Coralite® 488-Conjugated Goat Anti-Rabbit IgG(H+L) (SA00013-2), CL594-Phalloidin (red).