

For Research Use Only

TBC1D5 Recombinant antibody, PBS Only (Capture)

Catalog Number: 84990-2-PBS



Basic Information

Catalog Number: 84990-2-PBS	GenBank Accession Number: BC013145	Purification Method: Protein A purification
Size: 100ug , Concentration: 1 mg/ml by Nanodrop;	GeneID (NCBI): 9779	CloneNo.: 242534G10
Source: Rabbit	UNIPROT ID: Q92609	
Isotype: IgG	Full Name: TBC1 domain family, member 5	
Immunogen Catalog Number: AG10991	Calculated MW: 795 aa, 89 kDa	

Applications

Tested Applications:
Cytometric bead array, Sandwich ELISA, Indirect ELISA, Sample test

Species Specificity:
human

Product Information

84990-2-PBS targets TBC1D5 as part of a matched antibody pair:

MP01735-1: 84990-2-PBS capture and 84990-3-PBS detection (validated in Cytometric bead array)

MP01735-2: 84990-2-PBS capture and 84990-1-PBS detection (validated in Cytometric bead array, Sandwich ELISA)

Unconjugated rabbit recombinant monoclonal antibody in PBS only (BSA and azide free) storage buffer at a concentration of 1 mg/mL, ready for conjugation. Created using Proteintech's proprietary in-house recombinant technology. Recombinant production enables unrivalled batch-to-batch consistency, easy scale-up, and future security of supply.

This conjugation ready format makes antibodies ideal for use in many applications including: ELISAs, multiplex assays requiring matched pairs, mass cytometry, and multiplex imaging applications. Antibody use should be optimized by the end user for each application and assay.

Storage

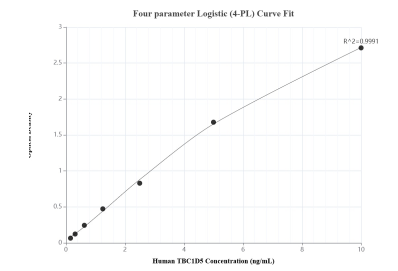
Storage:
Store at -80°C.

Storage Buffer:
PBS only, pH7.3

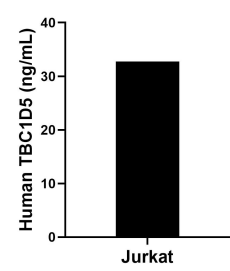
For technical support and original validation data for this product please contact:
T: 1 (888) 4PTGLAB (1-888-478-4522) (toll free in USA), or 1(312) 455-8498 (outside USA)
E: proteintech@ptglab.com
W: ptglab.com

This product is exclusively available under Proteintech Group brand and is not available to purchase from any other manufacturer.

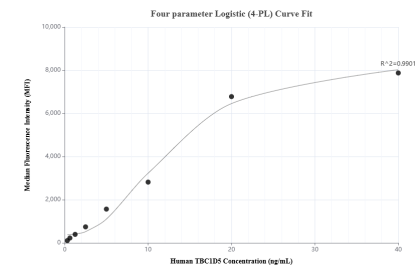
Selected Validation Data



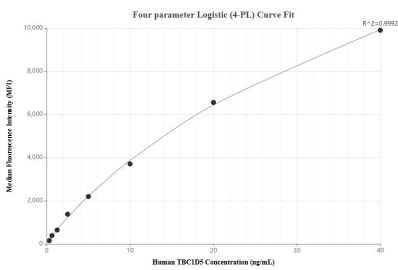
Sandwich ELISA standard curve of MP01735-2, Human TBC1D5 Recombinant Matched Antibody Pair - PBS only. 84990-2-PBS was coated to a plate as the capture antibody and incubated with serial dilutions of standard Ag10991. 84990-1-PBS was HRP conjugated as the detection antibody. Range: 0.156-10 ng/mL



The mean TBC1D5 concentration was determined to be 32.73 ng/mL in Jurkat cell extract based on a 2.00 mg/mL extract load.



Cytometric bead array standard curve of MP01735-2, TBC1D5 Recombinant Matched Antibody Pair, PBS Only. Capture antibody: 84990-2-PBS. Detection antibody: 84990-1-PBS. Standard: Ag10991. Range: 0.313-40 ng/mL



Cytometric bead array standard curve of MP01735-1, TBC1D5 Recombinant Matched Antibody Pair, PBS Only. Capture antibody: 84990-2-PBS. Detection antibody: 84990-3-PBS. Standard: Ag10991. Range: 0.313-40 ng/mL