

For Research Use Only

NADK Recombinant antibody, PBS Only (Detector)

Catalog Number: 84996-2-PBS



Basic Information

Catalog Number: 84996-2-PBS	GenBank Accession Number: BC001709	Purification Method: Protein A purification
Size: 100ug , Concentration: 1 mg/ml by Nanodrop;	GeneID (NCBI): 65220	CloneNo.: 242502C5
Source: Rabbit	UNIPROT ID: O95544	
Isotype: IgG	Full Name: NAD kinase	
Immunogen Catalog Number: AG7906	Calculated MW: 49 kDa	

Applications

Tested Applications:
Cytometric bead array, Sandwich ELISA, Indirect ELISA, Sample test

Species Specificity:
human

Product Information

84996-2-PBS targets NADK as part of a matched antibody pair:

MP01732-1: 84996-1-PBS capture and 84996-2-PBS detection (validated in Cytometric bead array)

MP01732-2: 84996-3-PBS capture and 84996-2-PBS detection (validated in Sandwich ELISA)

Unconjugated rabbit recombinant monoclonal antibody in PBS only (BSA and azide free) storage buffer at a concentration of 1 mg/mL, ready for conjugation. Created using Proteintech's proprietary in-house recombinant technology. Recombinant production enables unrivalled batch-to-batch consistency, easy scale-up, and future security of supply.

This conjugation ready format makes antibodies ideal for use in many applications including: ELISAs, multiplex assays requiring matched pairs, mass cytometry, and multiplex imaging applications. Antibody use should be optimized by the end user for each application and assay.

Storage

Storage:
Store at -80°C.

Storage Buffer:
PBS Only

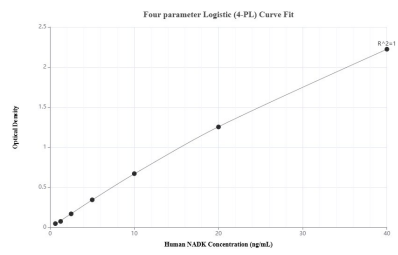
For technical support and original validation data for this product please contact:

T: 1 (888) 4PTGLAB (1-888-478-4522) (toll free in USA), or 1(312) 455-8498 (outside USA)

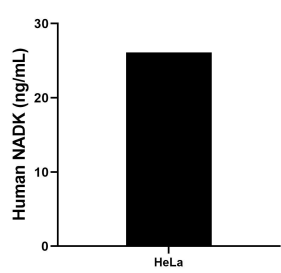
E: proteintech@ptglab.com
W: ptglab.com

This product is exclusively available under Proteintech Group brand and is not available to purchase from any other manufacturer.

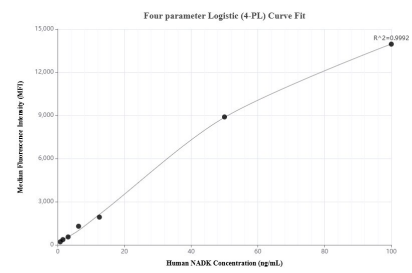
Selected Validation Data



Sandwich ELISA standard curve of MP01732-2, Human NADK Recombinant Matched Antibody Pair - PBS only. 84996-3-PBS was coated to a plate as the capture antibody and incubated with serial dilutions of standard Ag7906. 84996-2-PBS was HRP conjugated as the detection antibody. Range: 0.625-40 ng/mL



The mean NADK concentration was determined to be 26.13 ng/mL in HeLa cell extract based on a 1.5 mg/mL extract load.



Cytometric bead array standard curve of MP01732-1, NADK Recombinant Matched Antibody Pair, PBS Only. Capture antibody: 84996-1-PBS. Detection antibody: 84996-2-PBS. Standard: Ag7906. Range: 0.781-100 ng/mL