

For Research Use Only

ATP1A2 Recombinant antibody, PBS Only (Capture)

Catalog Number: 84999-3-PBS



Basic Information

Catalog Number: 84999-3-PBS	GenBank Accession Number: BC052271	Purification Method: Protein A purification
Size: 100ug, Concentration: 1 mg/ml by Nanodrop;	GeneID (NCBI): 477	CloneNo.: 242414G10
Source: Rabbit	UNIPROT ID: P50993	
Isotype: IgG	Full Name: ATPase, Na ⁺ /K ⁺ transporting, alpha 2 (+) polypeptide	
Immunogen Catalog Number: AG10489	Calculated MW: 1020 aa, 112 kDa	

Applications

Tested Applications:
Cytometric bead array, Sandwich ELISA, Indirect ELISA, Sample test

Species Specificity:
human

Product Information

84999-3-PBS targets ATP1A2 as part of a matched antibody pair:

MP01738-1: 84999-3-PBS capture and 84999-2-PBS detection (validated in Cytometric bead array, Sandwich ELISA)

Unconjugated rabbit recombinant monoclonal antibody in PBS only (BSA and azide free) storage buffer at a concentration of 1 mg/mL, ready for conjugation. Created using Proteintech's proprietary in-house recombinant technology. Recombinant production enables unrivalled batch-to-batch consistency, easy scale-up, and future security of supply.

This conjugation ready format makes antibodies ideal for use in many applications including: ELISAs, multiplex assays requiring matched pairs, mass cytometry, and multiplex imaging applications. Antibody use should be optimized by the end user for each application and assay.

Storage

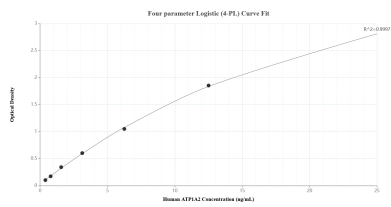
Storage:
Store at -80°C.

Storage Buffer:
PBS only, pH7.3

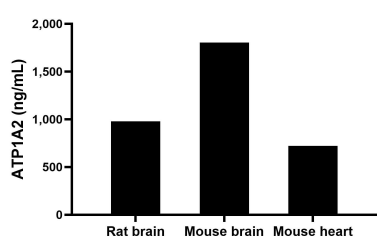
For technical support and original validation data for this product please contact:
T: 1 (888) 4PTGLAB (1-888-478-4522) (toll free in USA), or 1(312) 455-8498 (outside USA)
E: proteintech@ptglab.com
W: ptglab.com

This product is exclusively available under Proteintech Group brand and is not available to purchase from any other manufacturer.

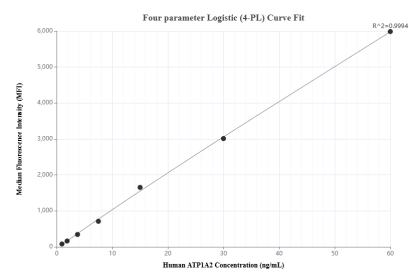
Selected Validation Data



Sandwich ELISA standard curve of MP01738-1, Human ATP1A2 Recombinant Matched Antibody Pair - PBS only. 84999-3-PBS was coated to a plate as the capture antibody and incubated with serial dilutions of standard Ag10489. 84999-2-PBS was HRP conjugated as the detection antibody. Range: 0.391-25 ng/mL



The mean ATP1A2 concentration was determined to be 976.80 ng/mL in rat brain tissue extract based on a 1.60 mg/mL extract load, 1,802.51 ng/mL in mouse brain tissue extract based on a 2.20 mg/mL extract load and 719.92 ng/mL in mouse heart tissue extract based on a 1.40 mg/mL extract load.



Cytometric bead array standard curve of MP01738-1, ATP1A2 Recombinant Matched Antibody Pair, PBS Only. Capture antibody: 84999-3-PBS. Detection antibody: 84999-2-PBS. Standard: Ag10489. Range: 0.938-60 ng/mL