

For Research Use Only

ATP1A2 Recombinant antibody, PBS Only

Catalog Number: 84999-4-PBS



Basic Information

Catalog Number:

84999-4-PBS

Size:

100ug, Concentration: 1 mg/ml by Nanodrop;

Source:

Rabbit

Isotype:

IgG

Immunogen Catalog Number:

AG10489

GenBank Accession Number:

BC052271

GeneID (NCBI):

477

UNIPROT ID:

P50993

Full Name:

ATPase, Na⁺/K⁺ transporting, alpha 2 (+) polypeptide

Calculated MW:

1020 aa, 112 kDa

Observed MW:

97-100 kDa

Purification Method:

Protein A purification

CloneNo.:

242414G12

Applications

Tested Applications:

WB, IHC, Indirect ELISA

Species Specificity:

human, mouse, rat

Background Information

ATP1A2 (Na⁺/K⁺-ATPase α-2 subunit) is the catalytic component of the active enzyme Na⁺/K⁺-ATPase, which catalyzes the hydrolysis of ATP coupled with the exchange of sodium and potassium ions across the plasma membrane. The Na⁺/K⁺-ATPase is composed of a larger catalytic α-subunit (~110 kDa) and a small β-subunit (~55 kDa). The α subunit has four isoforms identified to date: α1, α2, α3 and α4. The α1 isoform is expressed ubiquitously but the α2 isoform is present largely in the skeletal muscle, heart and vascular smooth muscle. The α3 isoform is found almost exclusively in neurons and ovaries. The α4 isoform is expressed in sperm. For optimal WB detection with ATP1A2, we do not recommend boiling the sample after lysis.

Storage

Storage:

Store at -80°C.

Storage Buffer:

PBS Only

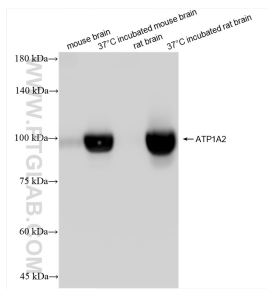
For technical support and original validation data for this product please contact:

T: 1 (888) 4PTGLAB (1-888-478-4522) (toll free in USA), or 1(312) 455-8498 (outside USA)

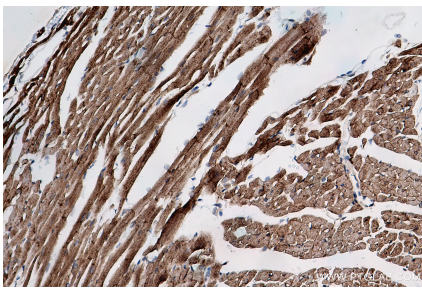
E: proteintech@ptglab.com
W: ptglab.com

This product is exclusively available under Proteintech Group brand and is not available to purchase from any other manufacturer.

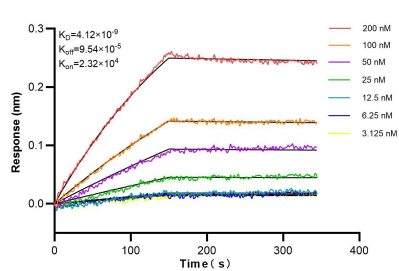
Selected Validation Data



Various lysates were subjected to SDS PAGE followed by western blot with 84999-4-RR (ATP1A2 antibody) at dilution of 1:10000 incubated at room temperature for 1.5 hours. This data was developed using the same antibody clone with 84999-4-PBS in a different storage buffer formulation.



Immunohistochemical analysis of paraffin-embedded mouse heart tissue slide using 84999-4-RR (ATP1A2 antibody) at dilution of 1:400 (under 20x lens). Heat mediated antigen retrieval with Tris-EDTA buffer (pH 9.0). This data was developed using the same antibody clone with 84999-4-PBS in a different storage buffer formulation.



Biolayer interferometry (BLI) kinetic assays of 84999-4-RR against Human ATP1A2 were performed. The affinity constant is 4.12 nM.