

For Research Use Only

Mouse LAIR1 Recombinant antibody, PBS Only

Catalog Number: 85010-1-PBS



Basic Information

Catalog Number: 85010-1-PBS	GenBank Accession Number: NM_001113474.1	Purification Method: Protein A purification
Size: 100ug , Concentration: 1 mg/ml by Nanodrop;	GeneID (NCBI): 52855	CloneNo.: 242226B10
Source: Rabbit	UNIPROT ID: Q8BG84-1	
Isotype: IgG	Full Name: leukocyte-associated Ig-like receptor 1	
Immunogen Catalog Number: EG1879	Calculated MW: 30kDa	
	Observed MW: 35 kDa, 45 kDa	

Applications

Tested Applications:
WB, IF/ICC, Indirect ELISA

Species Specificity:
mouse

Background Information

Leukocyte-associated immunoglobulin-like receptor 1 (LAIR1) is a transmembrane glycoprotein with a single immunoglobulin-like domain and a cytoplasmic tail containing two immune receptor tyrosine-based inhibitory motifs (PMID: 9285412). LAIR1 is expressed on the majority of human PBMCs, including NK, T, B, monocytes, and dendritic cells, as well as the majority of thymocytes (PMID: 10229813). It functions as an inhibitory receptor that plays a constitutive negative regulatory role on cytolytic function of NK cells, B cells and T cells. LAIR1 is a collagen receptor (PMID: 16754721). Tumor-expressed collagens can modulate immune cell function through the inhibitory collagen receptor LAIR1 (PMID: 21955987).

Storage

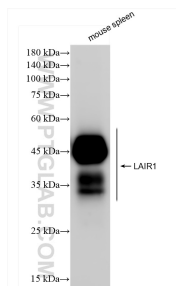
Storage:
Store at -80°C.

Storage Buffer:
PBS only, pH7.3

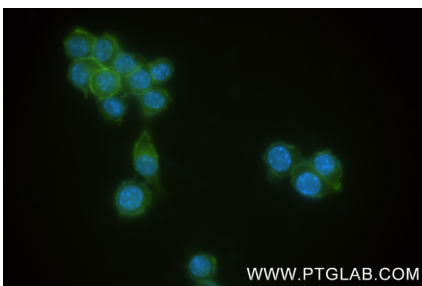
For technical support and original validation data for this product please contact:
T: 1 (888) 4PTGLAB (1-888-478-4522) (toll free in USA), or 1(312) 455-8498 (outside USA)
E: proteintech@ptglab.com
W: ptglab.com

This product is exclusively available under Proteintech Group brand and is not available to purchase from any other manufacturer.

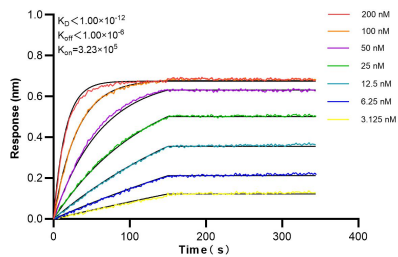
Selected Validation Data



mouse spleen tissue were subjected to SDS PAGE followed by western blot with 85010-1-RR (LAIR1 antibody) at dilution of 1:1000 incubated at room temperature for 1.5 hours. This data was developed using the same antibody clone with 85010-1-PBS in a different storage buffer formulation.



Immunofluorescent analysis of (4% PFA) fixed RAW 264.7 cells using LAIR1 antibody (85010-1-RR, Clone: 242226B10) at dilution of 1:400 and CoraLite® 488-Conjugated Goat Anti-Rabbit IgG(H+L) (SA00013-2). This data was developed using the same antibody clone with 85010-1-PBS in a different storage buffer formulation.



Biolayer interferometry (BLI) kinetic assays of 85010-1-RR against Mouse LAIR1 were performed. The affinity constant is below 1 pM.