

For Research Use Only

LRRC41 Recombinant antibody

Catalog Number: 85012-4-RR



Basic Information

Catalog Number:

85012-4-RR

Size:

100ul , Concentration: 1000 µg/ml by
Nanodrop;

Source:

Rabbit

Isotype:

IgG

Immunogen Catalog Number:

AG14266

GenBank Accession Number:

BC004953

GeneID (NCBI):

10489

UNIPROT ID:

Q15345

Full Name:

leucine rich repeat containing 41

Calculated MW:

812 aa, 87 kDa

Observed MW:

80-90 kDa

Purification Method:

Protein A purification

CloneNo.:

242380D2

Recommended Dilutions:

WB 1:5000-1:50000

Applications

Tested Applications:

WB, ELISA

Species Specificity:

human, mouse, rat

Positive Controls:

WB : H9C2 cells, RAW 264.7 cells, HEK-293T cells, K-562 cells, A549 cells, fetal human brain tissue

Background Information

The leucine-rich repeat containing 41 (LRRC41), a protein-coding gene, is widely expressed across various tissues, such as the thyroid and ovary tissues, characterized by two sub-structural domains.

Storage

Storage:

Store at -20°C. Stable for one year after shipment.

Storage Buffer:

PBS with 0.02% sodium azide and 50% glycerol, pH7.3

Aliquoting is unnecessary for -20°C storage

*** 20ul sizes contain 0.1% BSA

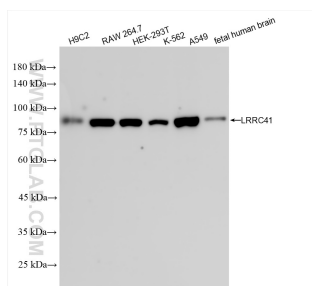
For technical support and original validation data for this product please contact:

T: 1 (888) 4PTGLAB (1-888-478-4522) (toll free
in USA), or 1(312) 455-8498 (outside USA)

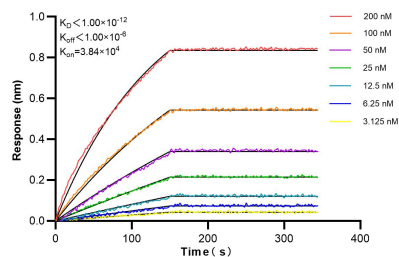
E: proteintech@ptglab.com
W: ptglab.com

This product is exclusively available under Proteintech Group brand and is not available to purchase from any other manufacturer.

Selected Validation Data



Various lysates were subjected to SDS PAGE followed by western blot with 85012-4-RR (LRRC41 antibody) at dilution of 1:10000 incubated at room temperature for 1.5 hours.



Biolayer interferometry (BLI) kinetic assays of 85012-4-RR against Human LRRC41 were performed. The affinity constant is below 1 pM.