

For Research Use Only

# CPT2 Recombinant antibody, PBS Only

Catalog Number: 85013-4-PBS



## Basic Information

<b>Catalog Number:</b> 85013-4-PBS	<b>GenBank Accession Number:</b> BC002445	<b>Purification Method:</b> Protein A purification
<b>Size:</b> 100ug , Concentration: 1 mg/ml by Nanodrop;	<b>GeneID (NCBI):</b> 1376	<b>CloneNo.:</b> 242381C5
<b>Source:</b> Rabbit	<b>UNIPROT ID:</b> P23786	
<b>Isotype:</b> IgG	<b>Full Name:</b> carnitine palmitoyltransferase 2	
<b>Immunogen Catalog Number:</b> AG24897	<b>Calculated MW:</b> 74 kDa	
	<b>Observed MW:</b> 65-70 kDa	

## Applications

**Tested Applications:**  
WB, Indirect ELISA

**Species Specificity:**  
human, mouse, rat

## Background Information

Carnitine palmitoyltransferase-1 and -2 (CPT1 and CPT2) are two genetically distinct mitochondrial membrane bound enzymes and play critical role in the regulation of FAO in normal cells. CPT2 is an ubiquitous protein and locates in the inner membrane of mitochondrial (PMID: 29437870). CPT2 is frequently down-regulated in primary ovarian serous carcinomas, which is significantly correlated with poor survival of ovarian cancer patients (PMID: 33486313). Down-regulation of CPT2 was a major cause of acylcarnitine accumulation and a common feature in mouse models of obesity- and NASH-driven HCC and human SH-HCC (PMID: 29872321).

## Storage

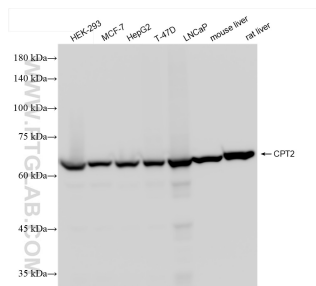
**Storage:**  
Store at -80°C.

**Storage Buffer:**  
PBS Only

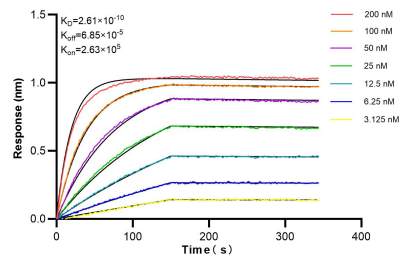
For technical support and original validation data for this product please contact:  
T: 1 (888) 4PTGLAB (1-888-478-4522) (toll free in USA), or 1(312) 455-8498 (outside USA)  
E: [proteintech@ptglab.com](mailto:proteintech@ptglab.com)  
W: [ptglab.com](http://ptglab.com)

This product is exclusively available under Proteintech Group brand and is not available to purchase from any other manufacturer.

## Selected Validation Data



Various lysates were subjected to SDS PAGE followed by western blot with 85013-4-RR (CPT2 antibody) at dilution of 1:10000 incubated at room temperature for 1.5 hours. This data was developed using the same antibody clone with 85013-4-PBS in a different storage buffer formulation.



Biolayer interferometry (BLI) kinetic assays of 85013-4-RR against Human CPT2 were performed. The affinity constant is 0.261 nM.