

For Research Use Only

CPT2 Recombinant antibody

Catalog Number: 85013-4-RR



Basic Information

Catalog Number: 85013-4-RR	GenBank Accession Number: BC002445	Purification Method: Protein A purification
Size: 100ul , Concentration: 1000 µg/ml by Nanodrop;	GeneID (NCBI): 1376	CloneNo.: 242381C5
Source: Rabbit	UNIPROT ID: P23786	Recommended Dilutions: WB 1:5000-1:50000
Isotype: IgG	Full Name: carnitine palmitoyltransferase 2	
Immunogen Catalog Number: AG24897	Calculated MW: 74 kDa	
	Observed MW: 65-70 kDa	

Applications

Tested Applications: WB, ELISA	Positive Controls: WB : HEK-293 cells, MCF-7 cells, HepG2 cells, T-47D cells, LNCaP cells, mouse liver tissue, rat liver tissue
Species Specificity: human, mouse, rat	

Background Information

Carnitine palmitoyltransferase-1 and -2 (CPT1 and CPT2) are two genetically distinct mitochondrial membrane bound enzymes and play critical role in the regulation of FAO in normal cells. CPT2 is an ubiquitous protein and locates in the inner membrane of mitochondrial (PMID: 29437870). CPT2 is frequently down-regulated in primary ovarian serous carcinomas, which is significantly correlated with poor survival of ovarian cancer patients (PMID: 33486313). Down-regulation of CPT2 was a major cause of acylcarnitine accumulation and a common feature in mouse models of obesity- and NASH-driven HCC and human SH-HCC (PMID: 29872321).

Storage

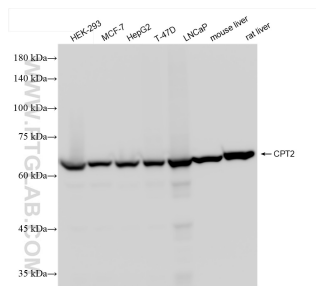
Storage:
Store at -20°C. Stable for one year after shipment.
Storage Buffer:
PBS with 0.02% sodium azide and 50% glycerol pH 7.3.
Aliquoting is unnecessary for -20°C storage

*** 20ul sizes contain 0.1% BSA

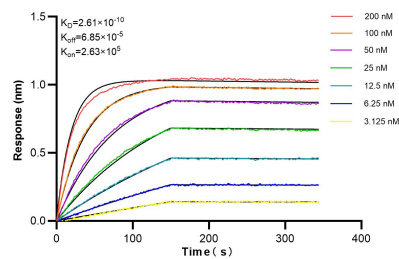
For technical support and original validation data for this product please contact:
T: 1 (888) 4PTGLAB (1-888-478-4522) (toll free in USA), or 1(312) 455-8498 (outside USA)
E: proteintech@ptglab.com
W: ptglab.com

This product is exclusively available under Proteintech Group brand and is not available to purchase from any other manufacturer.

Selected Validation Data



Various lysates were subjected to SDS PAGE followed by western blot with 85013-4-RR (CPT2 antibody) at dilution of 1:10000 incubated at room temperature for 1.5 hours.



Biolayer interferometry (BLI) kinetic assays of 85013-4-RR against Human CPT2 were performed. The affinity constant is 0.261 nM.