

For Research Use Only

Mouse HGF Recombinant antibody, PBS Only (Detector)

Catalog Number:85014-3-PBS



Basic Information

Catalog Number: 85014-3-PBS	GenBank Accession Number: NM_001289458.1	Purification Method: Protein A purification
Size: 100ug , Concentration: 1 mg/ml by Nanodrop;	GeneID (NCBI): 15234	CloneNo.: 242476H8
Source: Rabbit	UNIPROT ID: Q08048-1	
Isotype: IgG	Full Name: hepatocyte growth factor	
Immunogen Catalog Number: EG0675	Calculated MW: 83KD	

Applications

Tested Applications:
Cytometric bead array, Sandwich ELISA, Indirect ELISA, Sample test

Species Specificity:
mouse

Product Information

85014-3-PBS targets HGF as part of a matched antibody pair:

MP01760-1: 85014-1-PBS capture and 85014-3-PBS detection (validated in Cytometric bead array)

MP01760-2: 85014-2-PBS capture and 85014-3-PBS detection (validated in Cytometric bead array)

MP01760-3: 85014-4-PBS capture and 85014-3-PBS detection (validated in Sandwich ELISA)

Unconjugated rabbit recombinant monoclonal antibody in PBS only (BSA and azide free) storage buffer at a concentration of 1 mg/mL, ready for conjugation. Created using Proteintech's proprietary in-house recombinant technology. Recombinant production enables unrivalled batch-to-batch consistency, easy scale-up, and future security of supply.

This conjugation ready format makes antibodies ideal for use in many applications including: ELISAs, multiplex assays requiring matched pairs, mass cytometry, and multiplex imaging applications. Antibody use should be optimized by the end user for each application and assay.

Background Information

Hepatocyte growth factor (HGF) is the most potent mitogen of mature hepatocytes in primary culture. HGF is derived from a biologically inactive single chain precursor of 728 amino acids (pro-HGF) localized mostly on the cell surface and in the extracellular matrix. The mature form produced following proteolytic cleavage is composed of a 69-kDa α -subunit (containing four kringle domains) and the 34 kDa β -subunit, similar to the catalytic domain of serine proteases, but with amino acid substitutions in the active site. HGF is a pleiotropic cytokine which exerts a variety of effects on several cells, being involved in the regulation of many biological processes, such as inflammation, tissue repair, morphogenesis, angiogenesis, tumour propagation, immunomodulation of viral infections and cardio-metabolic activities.

Storage

Storage:
Store at -80°C.
Storage Buffer:
PBS only, pH7.3

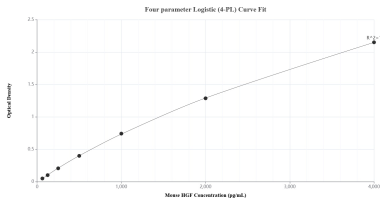
For technical support and original validation data for this product please contact:

T: 1 (888) 4PTGLAB (1-888-478-4522) (toll free in USA), or 1(312) 455-8498 (outside USA)

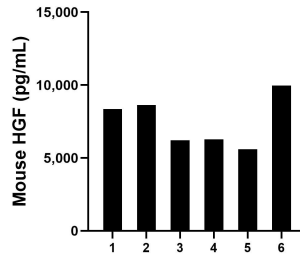
E: proteintech@ptglab.com
W: ptglab.com

This product is exclusively available under Proteintech Group brand and is not available to purchase from any other manufacturer.

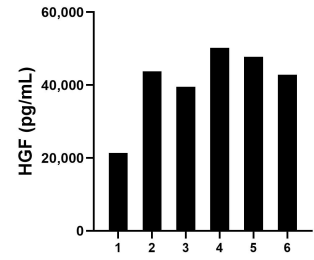
Selected Validation Data



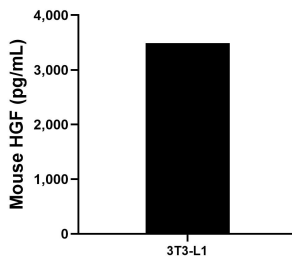
Sandwich ELISA standard curve of MP01760-3, Mouse HGF Recombinant Matched Antibody Pair - PBS only. 85014-4-PBS was coated to a plate as the capture antibody and incubated with serial dilutions of standard Eg0675. 85014-3-PBS was HRP conjugated as the detection antibody. Range: 62.5-4000 pg/mL



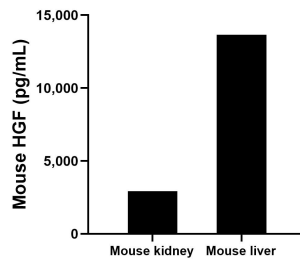
Serum of six mice was measured. The HGF concentration of detected samples was determined to be 7,505.4 pg/mL with a range of 5,590.3-9,962.8 pg/mL



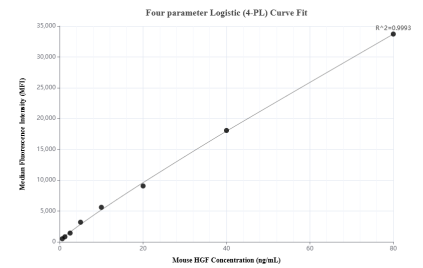
Serum of six rats was measured. The HGF concentration of detected samples was determined to be 40,922.2 pg/mL with a range of 21,345.0-50,183.1 pg/mL



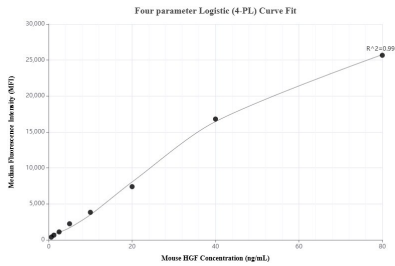
3T3-L1 cells were cultured in DMEM supplemented with 10% fetal bovine serum, 2.5 mM L-glutamine, 100 U/mL penicillin, and 100 µg/mL streptomycin sulfate. An aliquot of the cell culture supernatant was removed, assayed for mouse HGF, and measured 3,491.8 pg/mL



The mean HGF concentration was determined to be 2,919.6 pg/mL in mouse kidney tissue extract based on a 3.1 mg/mL extract load and 13,658.8 pg/mL in mouse liver tissue extract based on a 3.7 mg/mL extract load.



Cytometric bead array standard curve of MP01760-1, MOUSE HGF Recombinant Matched Antibody Pair, PBS Only. Capture antibody: 85014-1-PBS. Detection antibody: 85014-3-PBS. Standard: Eg0675. Range: 0.625-80 ng/mL



Cytometric bead array standard curve of MP01760-2, MOUSE HGF Recombinant Matched Antibody Pair, PBS Only. Capture antibody: 85014-2-PBS. Detection antibody: 85014-3-PBS. Standard: Eg0675. Range: 0.625-80 ng/mL