

For Research Use Only

# Mouse Hgf Recombinant antibody, PBS Only (Capture)

Catalog Number:85014-4-PBS



## Basic Information

<b>Catalog Number:</b> 85014-4-PBS	<b>GenBank Accession Number:</b> NM_001289458.1	<b>Purification Method:</b> Protein A purification
<b>Size:</b> 100ug , Concentration: 1 mg/ml by Nanodrop;	<b>GeneID (NCBI):</b> 15234	<b>CloneNo.:</b> 242476C1
<b>Source:</b> Rabbit	<b>UNIPROT ID:</b> Q08048-1	
<b>Isotype:</b> IgG	<b>Full Name:</b> hepatocyte growth factor	
<b>Immunogen Catalog Number:</b> EG0675	<b>Calculated MW:</b> 83KD	

## Applications

**Tested Applications:**  
Sandwich ELISA, Indirect ELISA, Sample test

**Species Specificity:**  
mouse

## Product Information

85014-4-PBS targets Hgf as part of a matched antibody pair:

MP01760-3: 85014-4-PBS capture and 85014-3-PBS detection (validated in Sandwich ELISA)

Unconjugated rabbit recombinant monoclonal antibody in PBS only (BSA and azide free) storage buffer at a concentration of 1 mg/mL, ready for conjugation. Created using Proteintech's proprietary in-house recombinant technology. Recombinant production enables unrivalled batch-to-batch consistency, easy scale-up, and future security of supply.

This conjugation ready format makes antibodies ideal for use in many applications including: ELISAs, multiplex assays requiring matched pairs, mass cytometry, and multiplex imaging applications. Antibody use should be optimized by the end user for each application and assay.

## Storage

**Storage:**  
Store at -80°C.  
**Storage Buffer:**  
PBS only, pH7.3

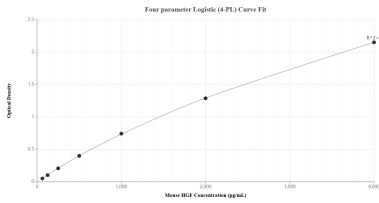
For technical support and original validation data for this product please contact:

T: 1 (888) 4PTGLAB (1-888-478-4522) (toll free in USA), or 1(312) 455-8498 (outside USA)

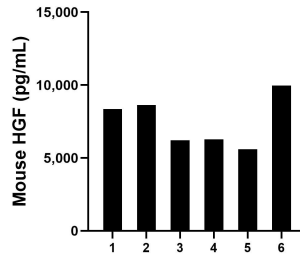
E: [proteintech@ptglab.com](mailto:proteintech@ptglab.com)  
W: [ptglab.com](http://ptglab.com)

**This product is exclusively available under Proteintech Group brand and is not available to purchase from any other manufacturer.**

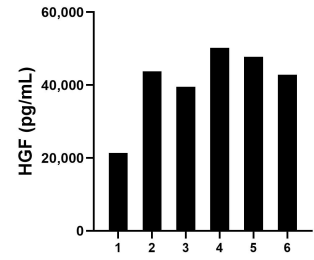
## Selected Validation Data



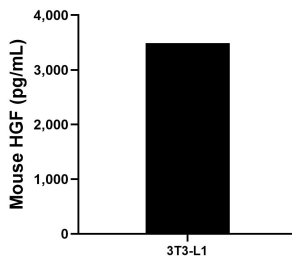
Sandwich ELISA standard curve of MP01760-3, Mouse HGF Recombinant Matched Antibody Pair - PBS only. 85014-4-PBS was coated to a plate as the capture antibody and incubated with serial dilutions of standard Eg0675. 85014-3-PBS was HRP conjugated as the detection antibody. Range: 62.5-4000 pg/mL



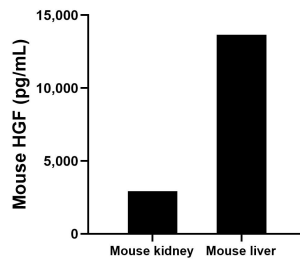
Serum of six mice was measured. The HGF concentration of detected samples was determined to be 7,505.4 pg/mL with a range of 5,590.3-9,962.8 pg/mL



Serum of six rats was measured. The HGF concentration of detected samples was determined to be 40,922.2 pg/mL with a range of 21,345.0-50,183.1 pg/mL



3T3-L1 cells were cultured in DMEM supplemented with 10% fetal bovine serum, 2.5 mM L-glutamine, 100 U/mL penicillin, and 100 µg/mL streptomycin sulfate. An aliquot of the cell culture supernate was removed, assayed for mouse HGF, and measured 3,491.8 pg/mL



The mean HGF concentration was determined to be 2,919.6 pg/mL in mouse kidney tissue extract based on a 3.1 mg/mL extract load and 13,658.8 pg/mL in mouse liver tissue extract based on a 3.7 mg/mL extract load.